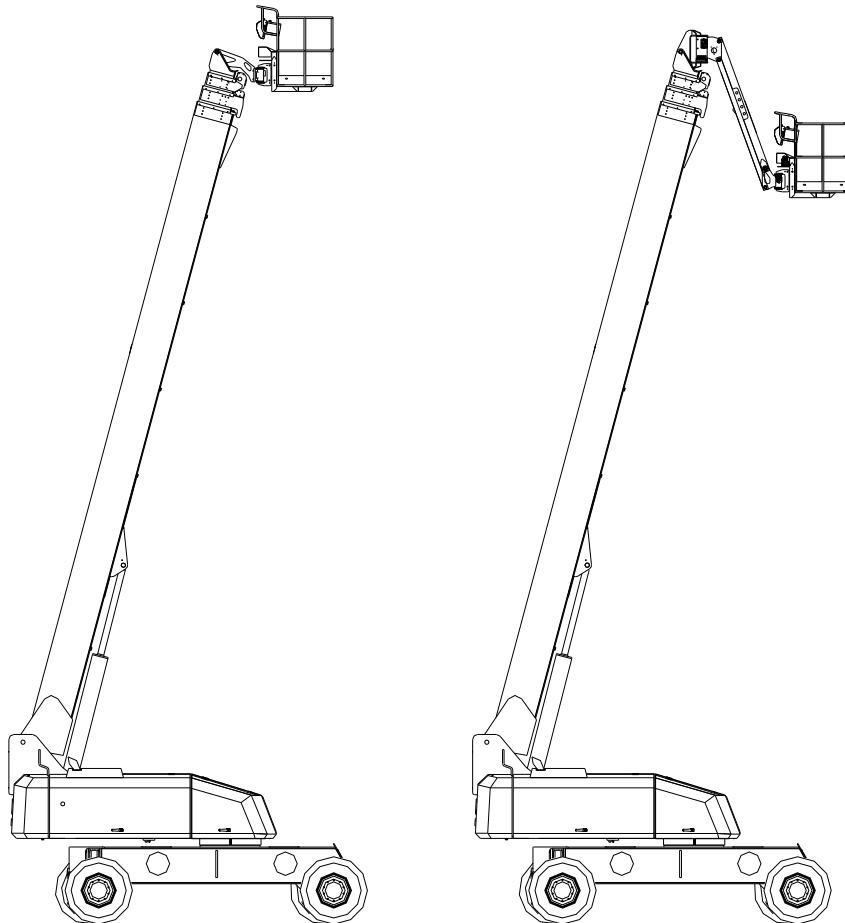




Hunan Sinoboom Heavy Industry Co., Ltd.

---

Parts Manual  
GTBZ-40 & GTBZ-42



---

© Copyright by Hunan Sinoboom Heavy Industry Co., Ltd .

The second edition: Sep, 2009

# CONTENT

1. Chassis Assembly.....	1
1.1 The Installation Of Lockout Cylinder .....	1
1.2 Front Crura Fixed Installation With Chassis .....	3
1.3 Axle expandable cylinder .....	5
1.4 Steer Installation .....	6
1.5 Tire And Wheel Drive Installation .....	8
1.6 The Installation Of Extendable Axle .....	10
1.7 Cover.....	12
2 Turntable.....	13
2.1 Turntable Swing Drive Installation .....	13
2.2 Counterweight Installation .....	15
2.3 Turntable Control Assembly Installation.....	17
2.4 Hydraulic Tank Installation .....	19
2.5 Batteries Installation.....	21
2.6 Left Hood Installation .....	23
2.7 Right Hood Installation .....	26
2.8 Cover Board Installation.....	29
2.9 Oil Box Installation .....	31
2.10 Engine Bracket Installation .....	33
2.11 Exhausting system assembling.....	35
2.12 Intake system assembling.....	37
2.13 Engine assembling .....	38
2.14 Cooling system assembling .....	40
3 Boom.....	42
3.1 Boom Wipers Installation .....	42
3.2 Towline System .....	44
3.3 Boom Assembly .....	46
3.4 Telescopic Construction.....	48
3.5 Folding Arm Assembly .....	51
3.6 Working Platform .....	53
4 Hydraulic .....	55
4.1 Hydraulic Schematic: .....	55
4.2 Hydraulic Valve .....	60
4.2.1 DPH-0510A-10 Valve.....	60
4.2.2 DPH-0510B-10 Platform Valve .....	61
4.2.3 ST0708-AC00 Valve .....	62
4.2.4 DPH-0612E-10R2 Flex Counterbalance Valve .....	63
4.2.5 ST1310-A000 Valve.....	64

## 1. Drive Chassis Assembly

### 1.1 The Installation Of Lockout Cylinder

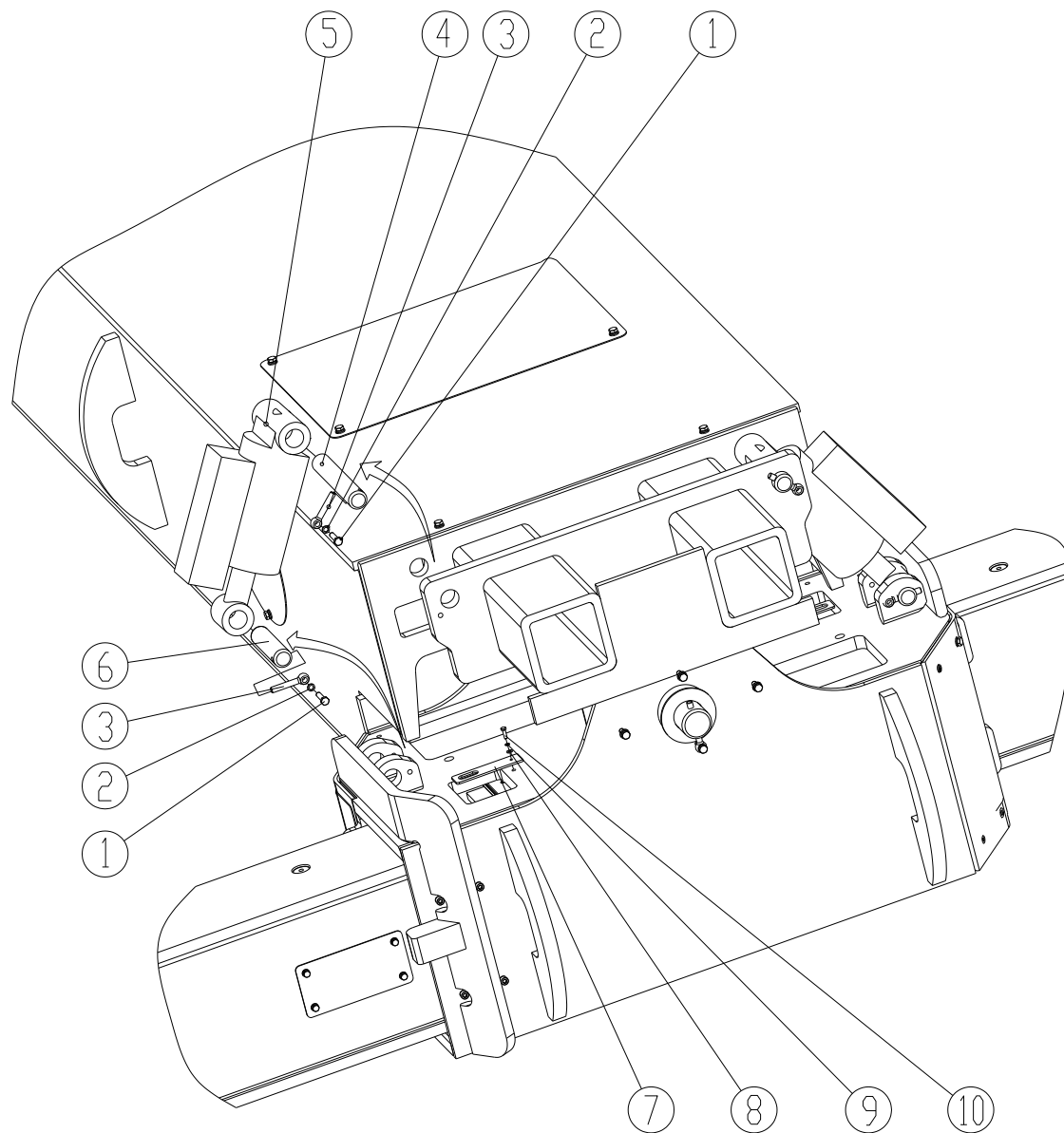


Fig 1-1

## Drive Chassis Components

---

Item	Part Number	Qty.	Description	Memo
1	4110021	4	Blot M10*40-10.9	
2	4501006	4	Lock Washer 10	
3	8300-280000-1120	4	Lock Rod End	
4	8420-280000-1160	2	Pivot Pin	
5	8420-560000-0000	2	Lockout Cylinder	
6	8420-280000-1170	2	Pivot Pin	
7	8420-280000-1090	4	Board	
8	4504004	4	Washer 8	
9	4501005	4	Lock Washer 8	
10	4110010	4	Bolt M8*20-8.8	

Chart 1-1

## 1.2 Front Crura Fixed Installation With Chassis

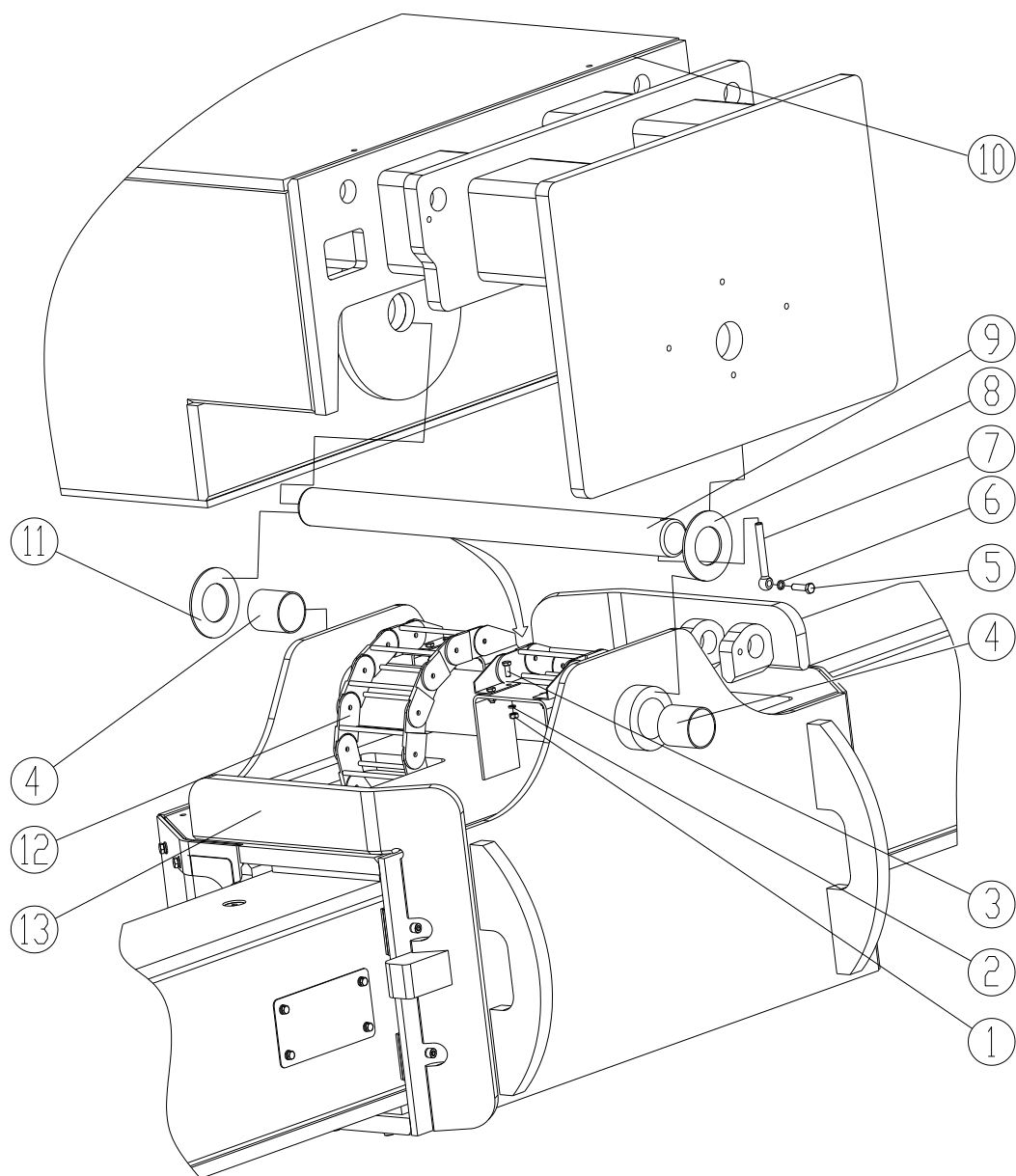


Fig 1-2

## Drive Chassis Components

---

Item	Part Number	Qty.	Description	Memo
1	4308005	16	Nuts M8-8	
2	4501005	16	Lock Washer 8	
3	4110010	16	M8*20-8.8	
4	5102008	2	Bearing 65*70*70	
5	4110033	1	Bolt M10*40-8.8	
6	4501006	1	Lock Washer 10	
7	8300-280000-1060	1	Lock Rod End	
8	8250-280000-1250	1	Lock Washer	
9	8420-280000-1020	1	Pivot Pin	
10	8420-280020-0000	1	Chassis	
11	8420-280000-1010	1	Lock Washer	
12	6601015	4	Towline	
13	8420-280060-0000	1	Front Crura	

Chart 1-2

### 1.3 Axle expandable cylinder

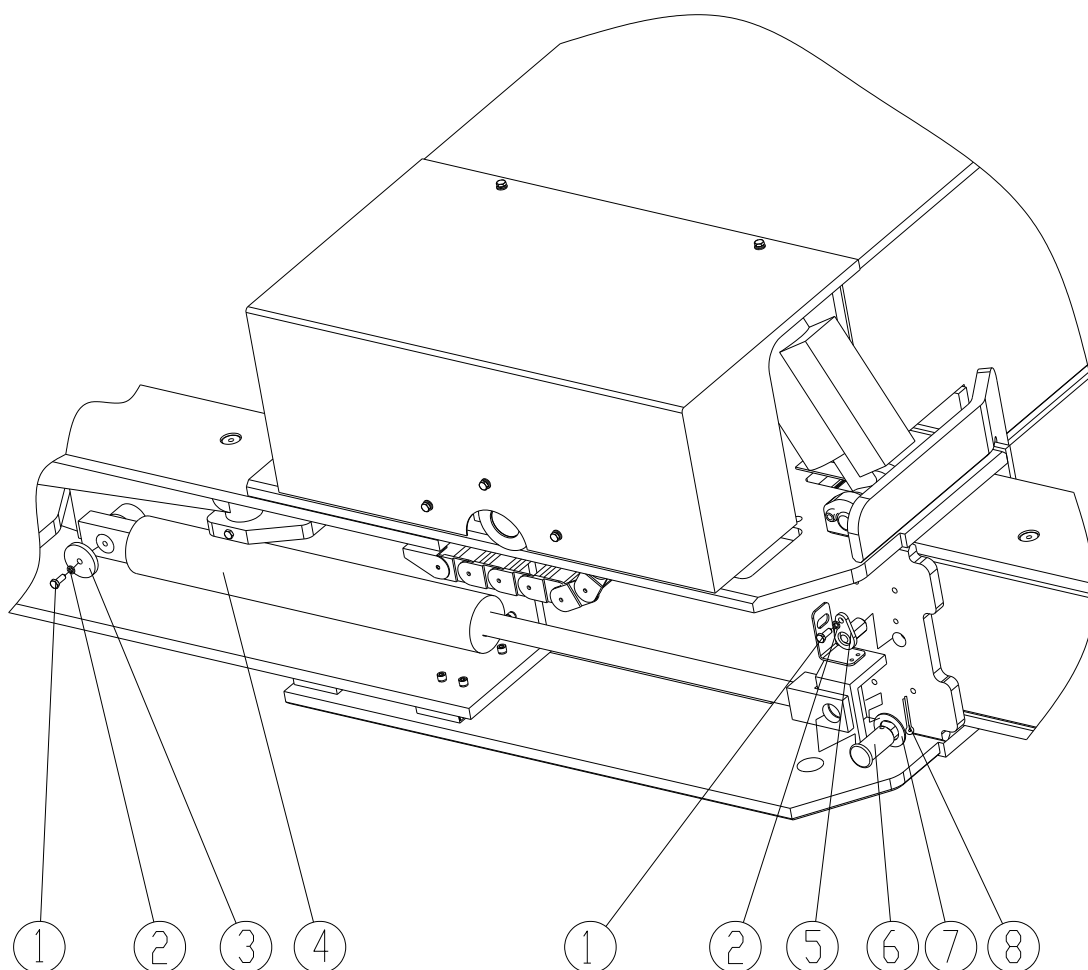


Fig 1-3

Item	Part Number	Qty.	Description	Memo
1	4110014	8	M10*20-8.8	
2	4501006	8	Lock Washer 10	
3	8420-280000-1220	4	Board	
4	8420-510000-0000	4	Axle expandable cylinder	
5	8420-280200-0000	4	Pivot Pin	
6	4709009	4	Pivot Pin B40*85	
7	8300-280000-1270	4	Lock Washer	
8	4701008	4	Pin 8*80	

Chart 1-3

### 1.4 Steer Installation

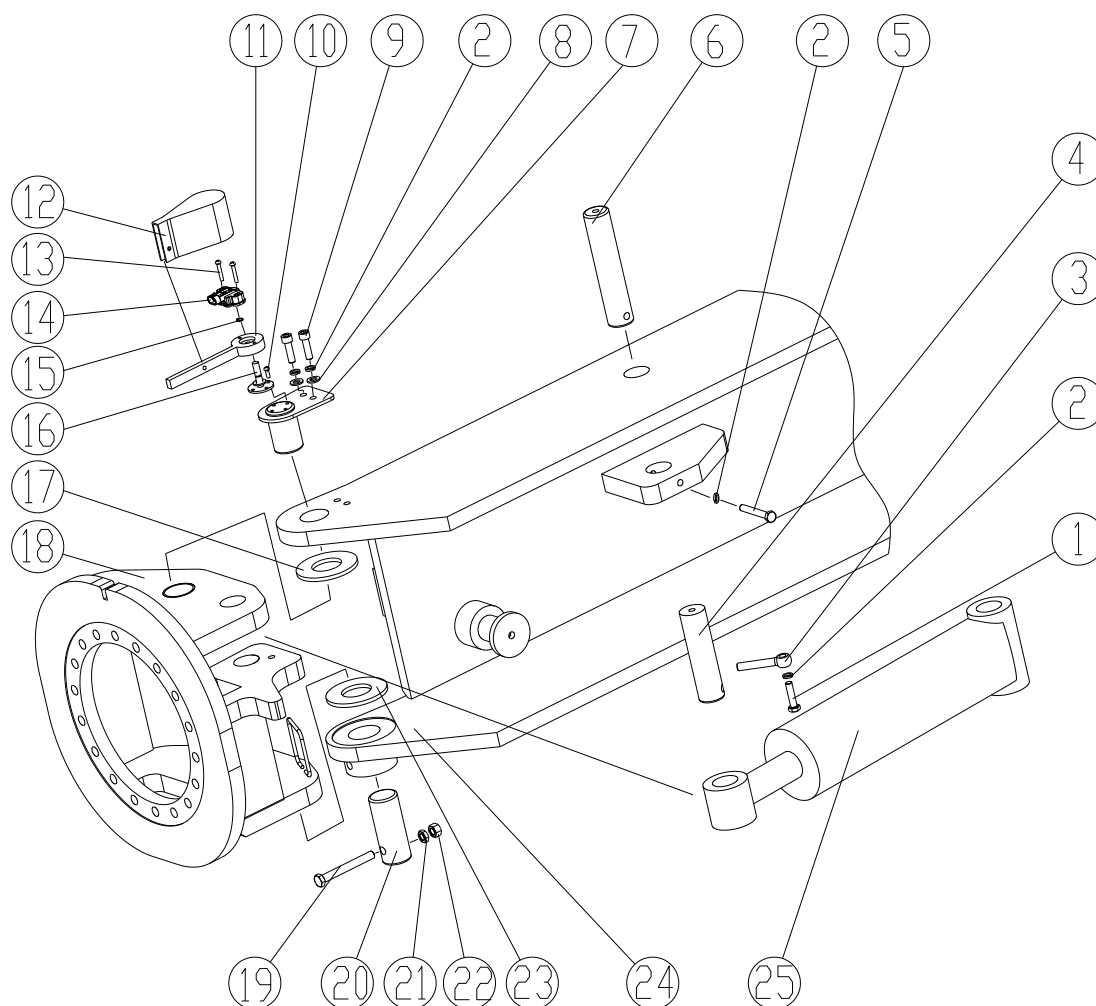


Fig 1-4



## Drive Chassis Components

---

Item	Part Number	Qty.	Description	Memo
1	4110021	4	Bolts M10*40-10.9	
2	4501006	16	Lock Washer 10	
3	8300-280000-1120	4	Lock Rod End	
4	8420-280000-1100	4	Pivot Pin	
5	4109028	4	M10*70-8.8	
6	8420-280000-1080	4	Pivot Pin	
7	8420-280160-0000	4	Pivot Pin	
8	4504005	8	Washer 10	
9	4110018	8	M10*30-8.8	
10	4154001	16	Screw M5*14-4.8	
11	8420-620040-1030	4	Pole	
12	8420-620040-1010	4	Cover	
13	4130016	8	Screw M5*30-4.8	
14	3602080	4	Steer Sensor	
15	4524015	4	Check Ring 9	
16	8420-620040-1040	4	Seat	
17	8420-280000-1180	4	Washer	
18	8420-280080-0000	4	Yoke Assembly	
19	4109023	4	Bolts M12*100-8.8	
20	8420-280000-1210	4	Pivot Pin	
21	4310005	4	Nuts M12-8	
22	4308007	4	Nuts M12-8	
23	8420-280000-1190	4	Washer	
24	8420-280040-0000	4	Extendable Axle	
25	8420-520000-0000	4	Steer Cylinder	

Chart 1-4

## 1.5 Tire And Wheel Drive Installation

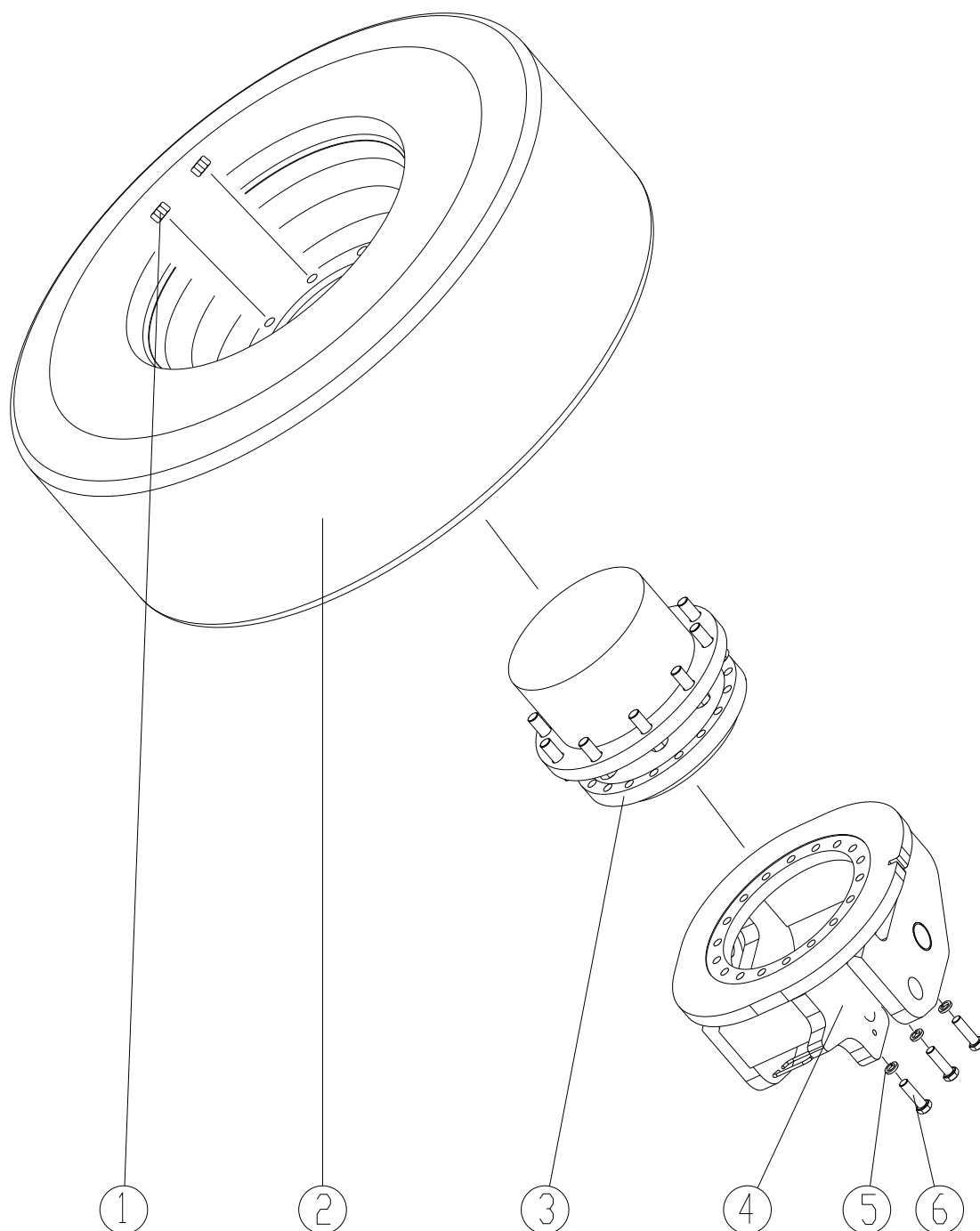


Fig 1-5

## Drive Chassis Components

---

Item	Part Number	Qty.	Description	Memo
1	4332002	40	Nuts 0.75-16UNF	
2	5526004	4	Tire 385/65-22.5	
3	3404005	4	Drive Hub Assembly	REGGIANA RIDUTTORI
4	8420-280080-0000	4	Yoke Assembly	
5	4501009	72	Lock Washer 16	
6	4109015	72	M16*50-10.9	

Chart 1-5

Item	Part Number	Qty.	Description	Memo
1	4332001	36	Nuts 0.625-18UNF	
2	5526004	4	Tire 385/65-22.5	
3	3404014	4	Drive Hub Assembly	Fairfield
4	8420-281080-0000	4	Yoke Assembly	
5	4501009	72	Lock Washer 16	
6	4100002	72	0.625-11UNF*1.75inGR12.9	

Chart 1-6

## 1.6 The Installation Of Extendable Axle

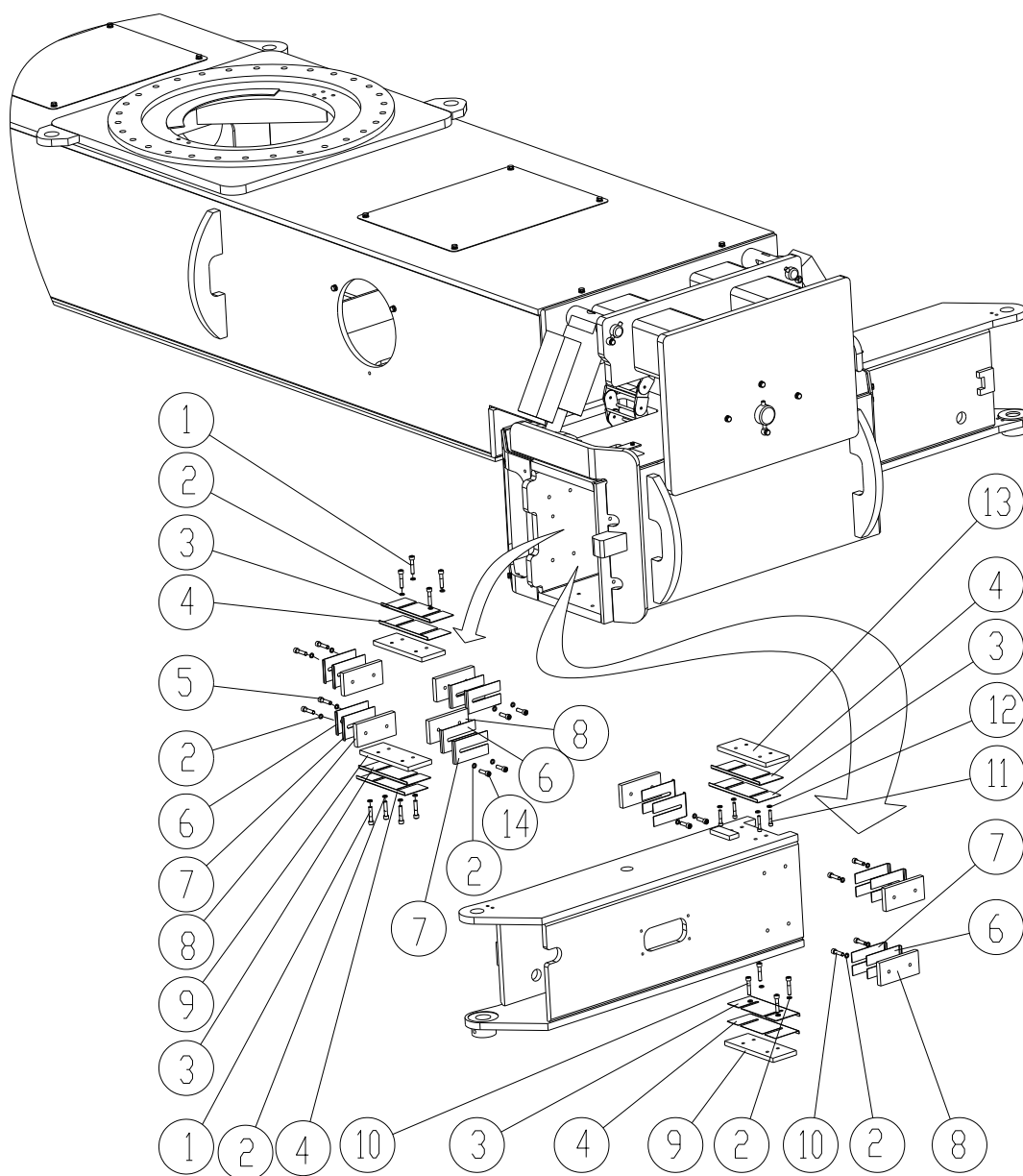


Fig 1-6

## Drive Chassis Components

---

Item	Part Number	Qty.	Description	Memo
1	4152020	48	Screw M10*50-8.8	
2	4501006	112	Lock Washer 10	
3	8420-280000-1050	16	Shim	
4	8420-280000-1060	16	Shim	
5	4152029	16	Screw M10*45-8.8	
6	8420-280000-1030	32	Shim	
7	8420-280000-1040	32	Shim	
8	8420-280100-0000	32	Side slider	
9	8420-280120-0000	12	slider	
10	4152019	48	Screw M10*40-8.8	
11	4152038	16	Screw M8*45-8.8	
12	4501005	16	Lock Washer 8	
13	8420-280180-0000	4	Shim	
14	4152018	16	Screw M10*35-8.8	

Chart 1-7

### 1.7 Cover

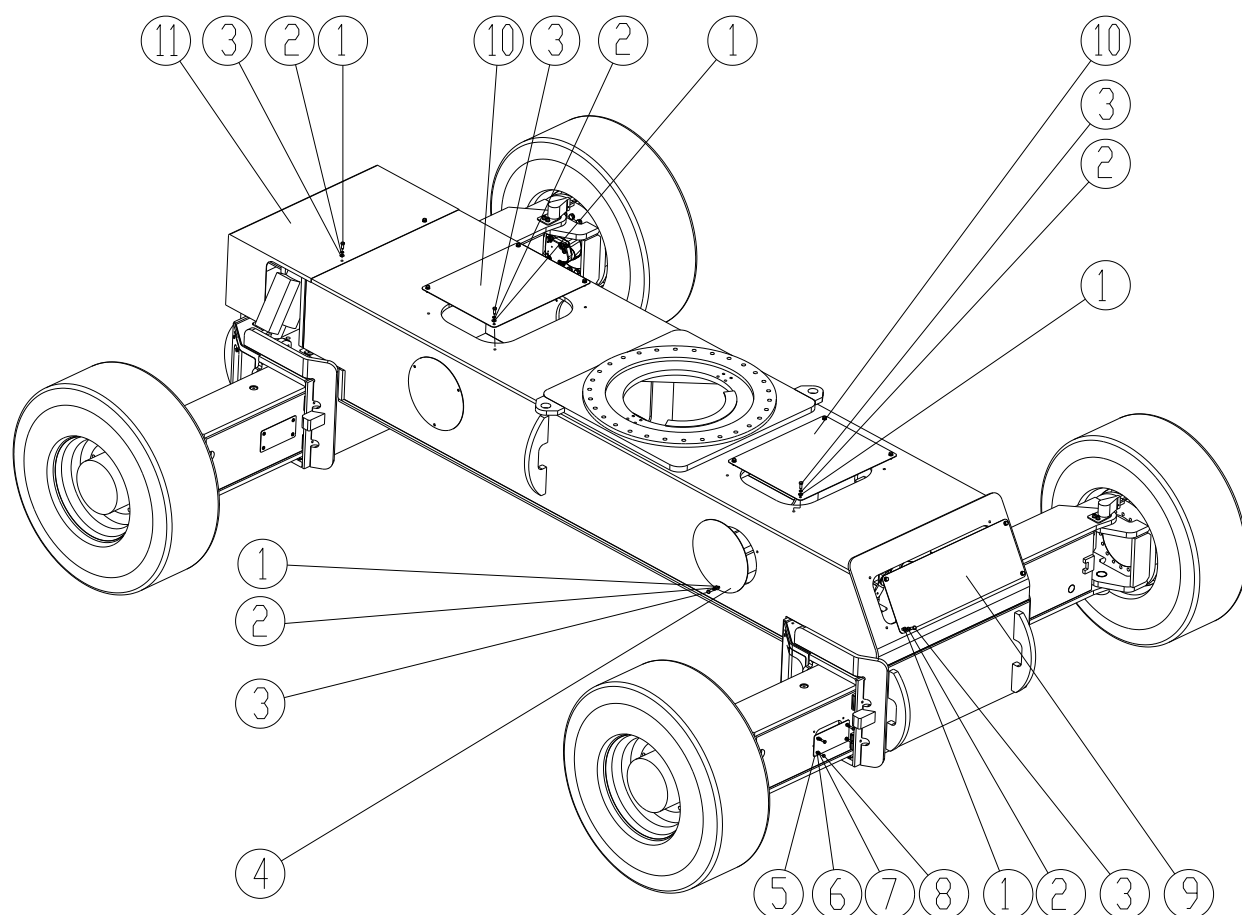


Fig 1-7

Item	Part Number	Qty.	Description	Memo
1	4504005	29	Washer 10	
2	4501006	29	Lock Washer 10	
3	4110014	29	Bolts M10*20-8.8	
4	8420-280000-1150	4	Cover Board	
5	8420-280000-1120	4	Cover Board	
6	4504004	16	Washer 8	
7	4501005	16	Lock Washer 8	
8	4110010	16	Bolts M8*20-8.8	
9	8420-280000-1130	1	Cover Board	
10	8420-280000-1110	2	Cover Board	
11	8420-280000-1200	1	Cover Board	

Chart 1-8

## 2 Turntable

### 2.1 Turntable Swing Drive Installation

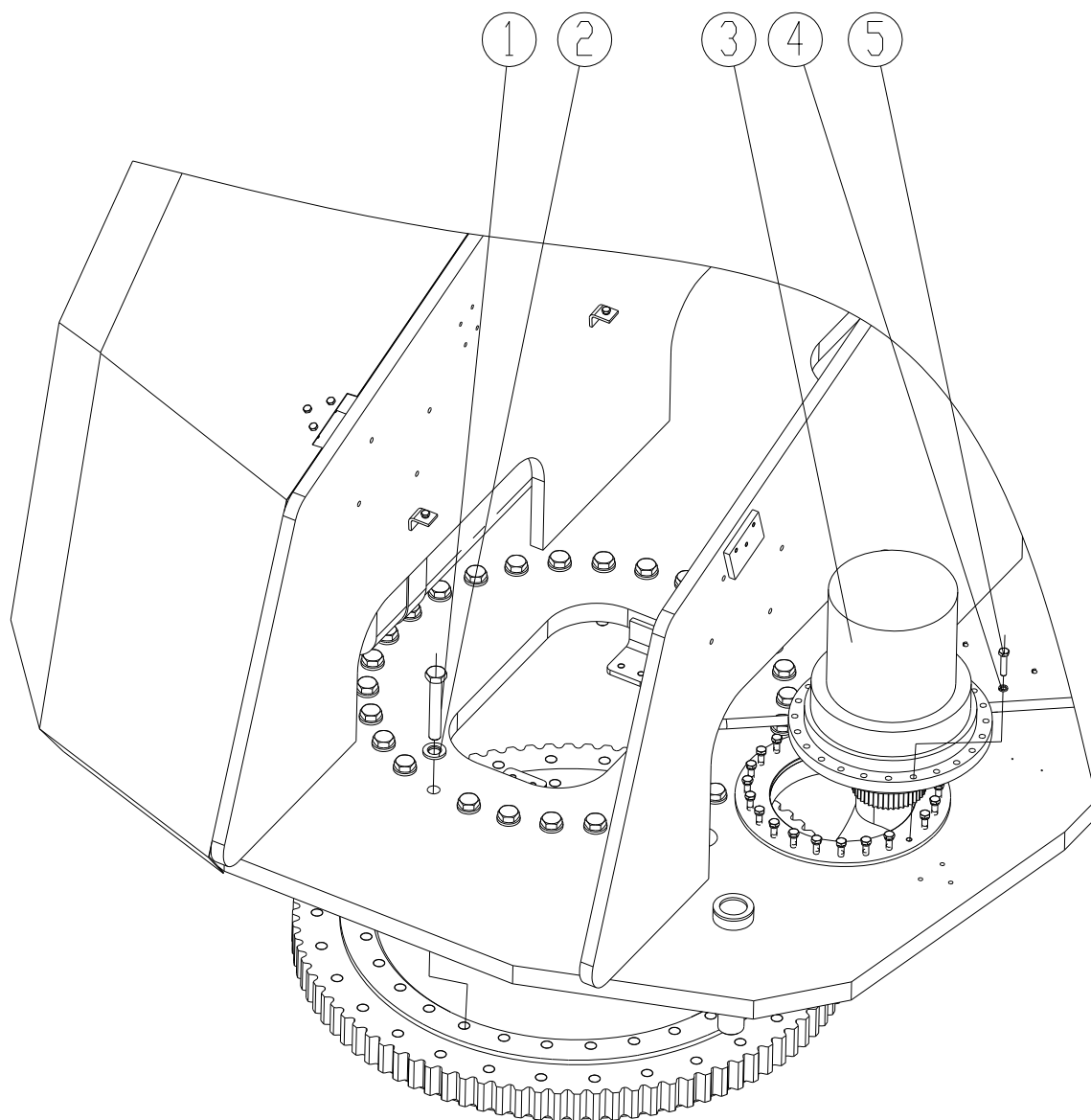


Fig 2-1

## Turntable Assembling

---

Item	Part Number	Qty.	Description	Memo
1	4108004	28	Blot M20*130-10.9S	
2	4510002	28	Flat Washer 20	
3	3404003	1	Turntable Rotation Drive Hub	
4	4501006	12	Lock Washer 10	
5	4109002	12	Bolt m10*45-8.8	

Chart 2-1



## 2.2 Counterweight Installation

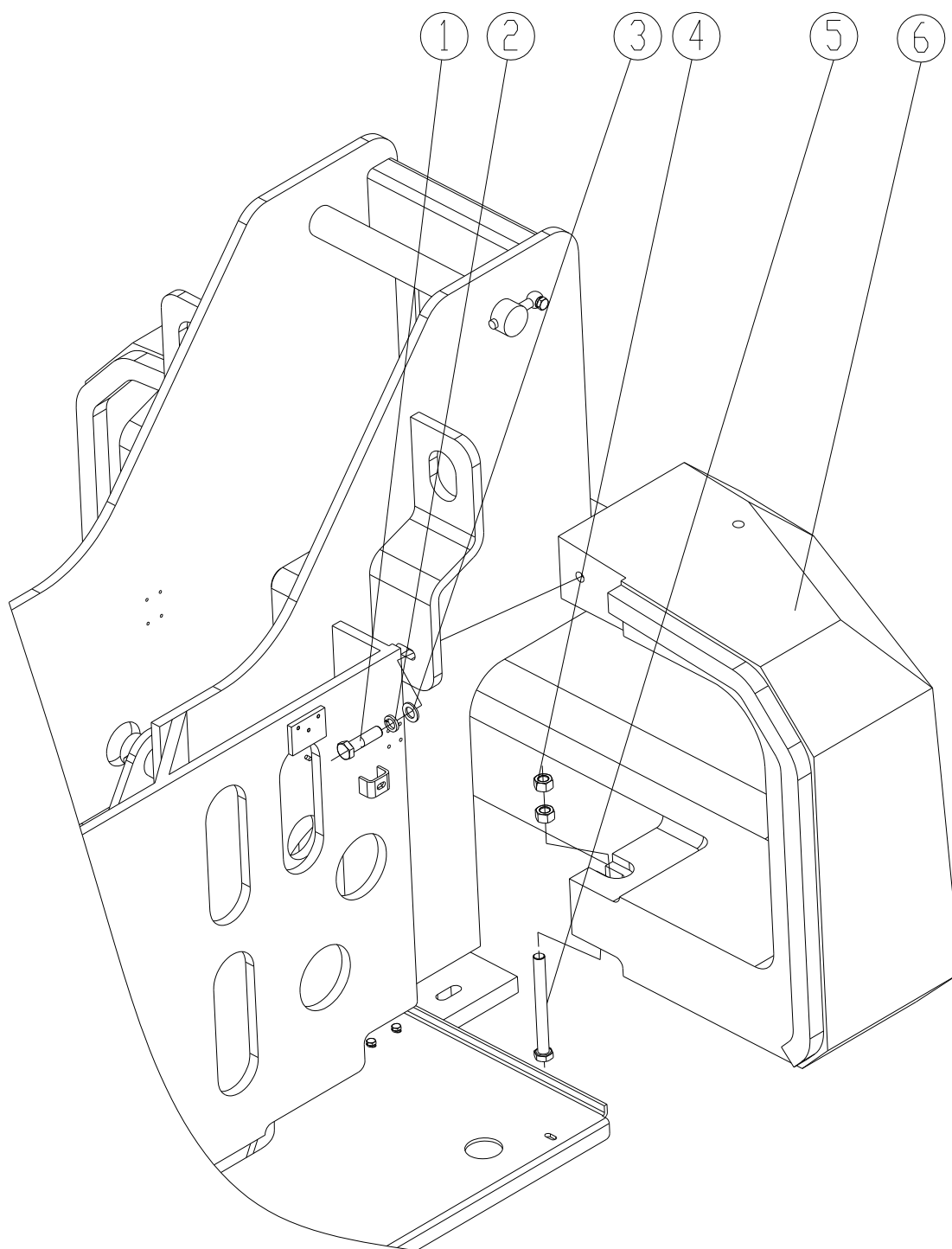


Fig 2-2

## Turntable Assembling

---

Item	Part Number	Qty.	Description	Memo
1	4109019	2	BlotM24*90-8.8	
2	4501012	2	Lock Washer24	
3	4504010	2	Washer24-200HV	
4	4308012	4	NutM24-8	
5	4109019	2	Bolt M24*210-8.8	
6	8420-400000-1010	1	Counterweight	

Chart 2-2

### 2.3 Turntable Control Assembly Installation

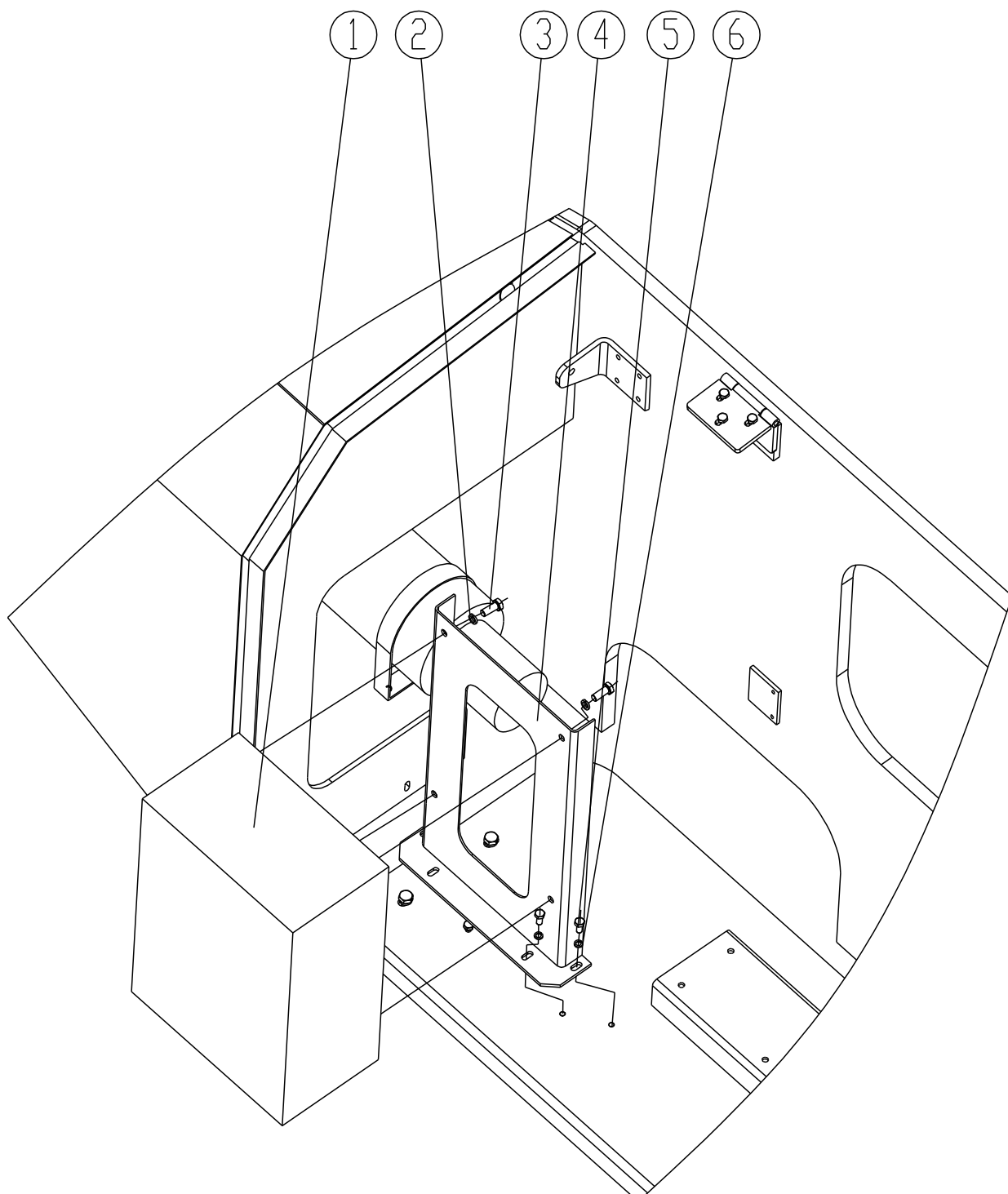


Fig 2-3

## Turntable Assembling

---

Item	Part Number	Qty.	Description	Memo
1	8420-630040-0000	1	Turntable control assembly	
2	4501006	4	Lock Washer 10	
3	4110014	4	Bolt M10*20-8.8	
4	8420-310120-0000	1	Bracket	
5	4110009	4	Bolt M8*16-8.8	
6	4501005	4	Lock Washer 8	

Chart 2-3

## 2. 4 Hydraulic Tank Installation

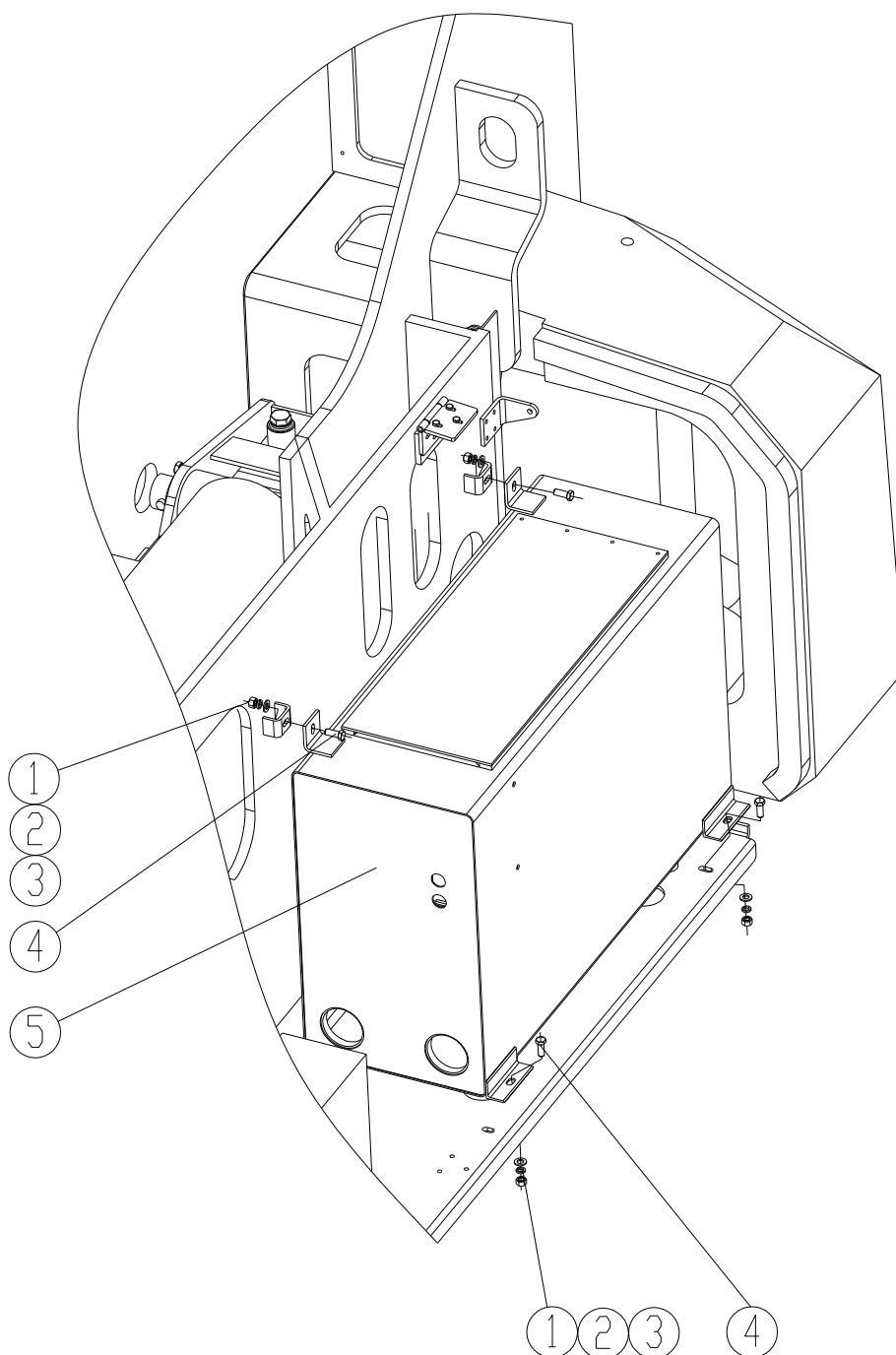


Fig 2-4

## Turntable Assembling

---

Item	Part Number	Qty.	Description	Memo
1	4308007	4	Nut M12-8	
2	4501007	4	Lock Washer 12	
3	4504006	4	Washer 12-200HV	
4	4110026	4	Blot M12*30-8.8	
5	8420-360000-0000	1	Hydraulic Oil Tank	

Chart 2-4

## 2.5 Batteries Installation

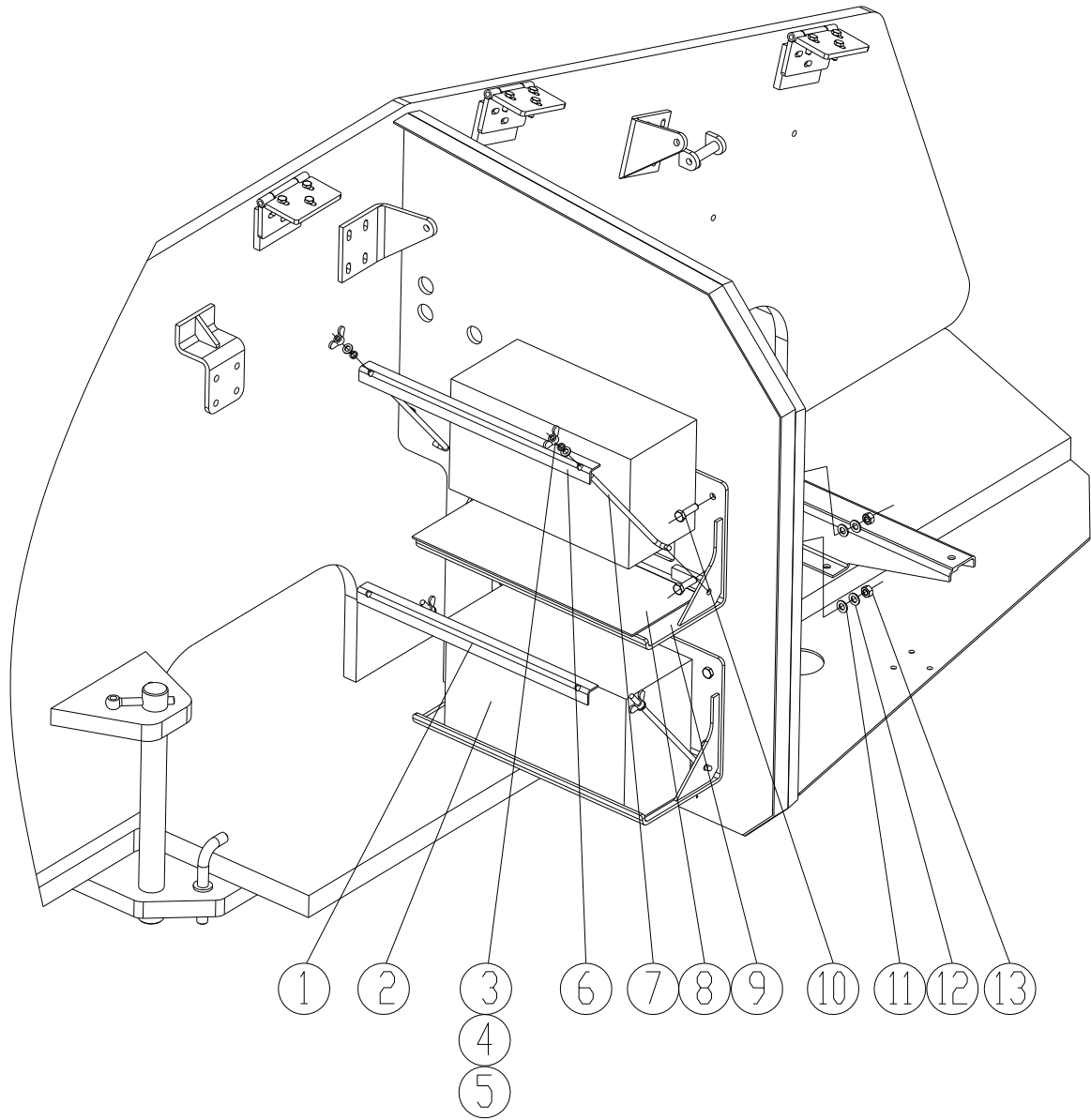


Fig 2-5

## Turntable Assembling

---

Item	Part Number	Qty.	Description	Memo
1	8300-630060-1020	1	Lock Board	
2	3401001	2	Battery	
3	4303001	4	Nut M8	
4	4501005	4	Lock Washer 8	
5	4504004	4	Washer 8-200HV	
6	8300-630060-1030	1	Lock Board	
7	8300-630060-1010	4	Pole	
8	8300-630060-1020	2	Rubber 447*164*3	
9	8300-630061-0000	2	Board	
10	4110019	8	Blot M10*35-10.9	
11	4504005	8	Washer 10-200HV	
12	4501006	8	Lock Washer 10	
13	4308006	8	Nut M10-8	

Chart 2-5



## 2.6 Left Hood Installation

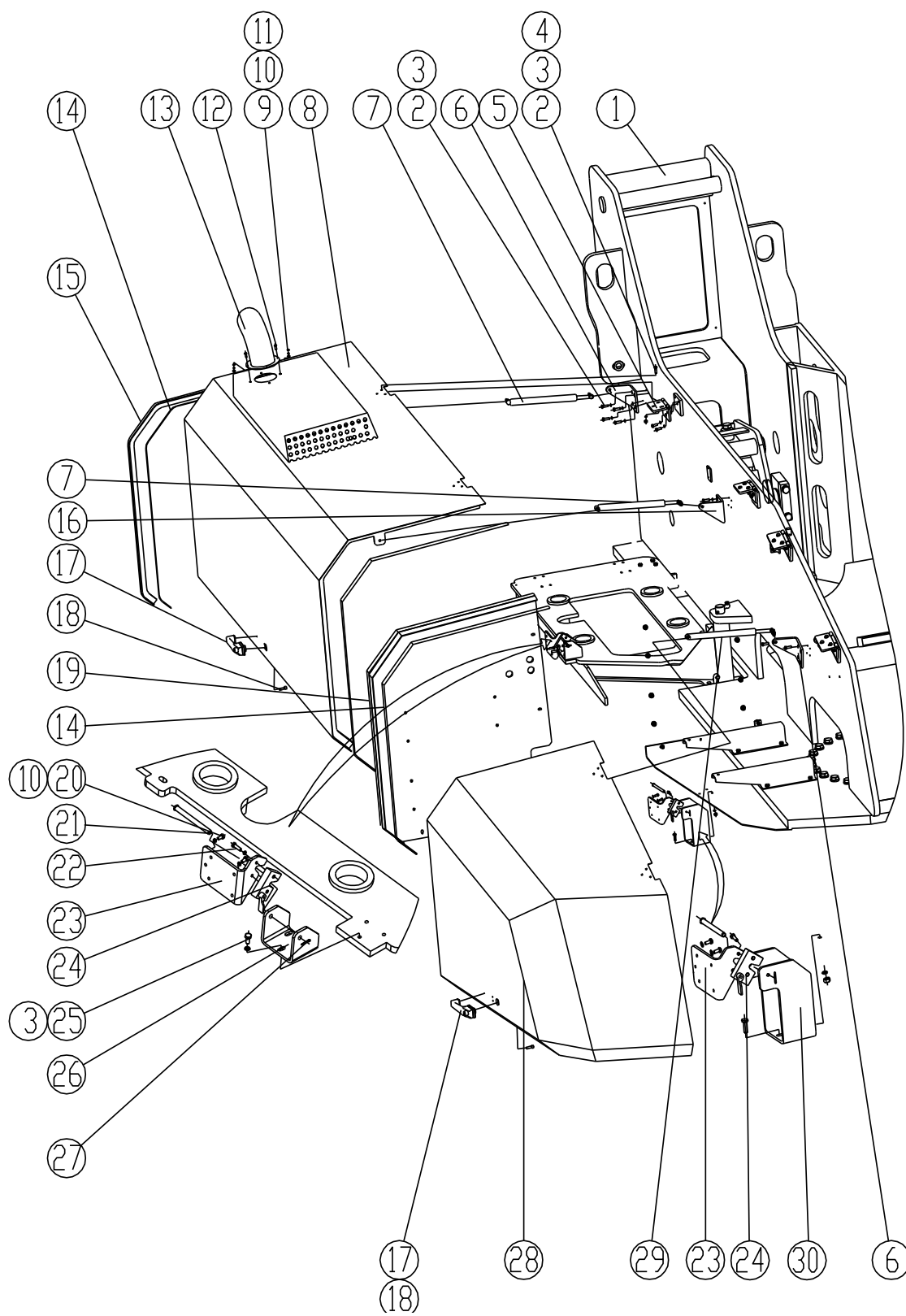


Fig 2-6

## Turntable Assembling

---

Item	Part Number	Qty.	Description	Memo
1	8420-300000-0000	1	Turntable	
2	4110011	24	BoltM8*20-8.8	
3	4501005	27	Lock Washer8	
4	4308005	12	NutM8-8	
5	8300-310040-0001	4	Gemel	
6	8420-310000-1130	2	Bracket	
7	6602017	2	Spring Gas	
8	8420-310020-0000	1	Hood	
9	4504012	10	Washer6	
10	4501004	4	Lock Washer6	
11	4308004	4	Nut M6-8	
12	4110005	4	BoltM6-8	
13	8300-310140-0001	1	Tail Pipe	
14	5410002	5m	Seal	
15	8420-310000-1140	1	Board	
16	8420-310000-1130	1	Bracket	
17	5829019	2	Knob	
18	4152008	1	ScrewM8*25-8.8	
19	8420-310080-0000	1	Clapboard	
20	4110006	6	BoltM6*20-8.8	
21	4709020	2	Pin B10*110	
22	4110005	8	Bolt M6*16-8.8	
23	8420-310000-1050	2	Board	
24	5829021	2	Lock	
25	4110009	3	Bolt M8*16-8.8	

## Turntable Assembling

---

Item	Part Number	Qty.	Description	Memo
26	8420-310000-1060	1	Bracket	
27	4701001	2	Pin 32*16	
28	8420-310060-0000	1	Hood	
29	6602019	1	Spring Gas	
30	8420-310000-1070	1	Bracket	

Chart 2-6

## 2.7 Right Hood Installation

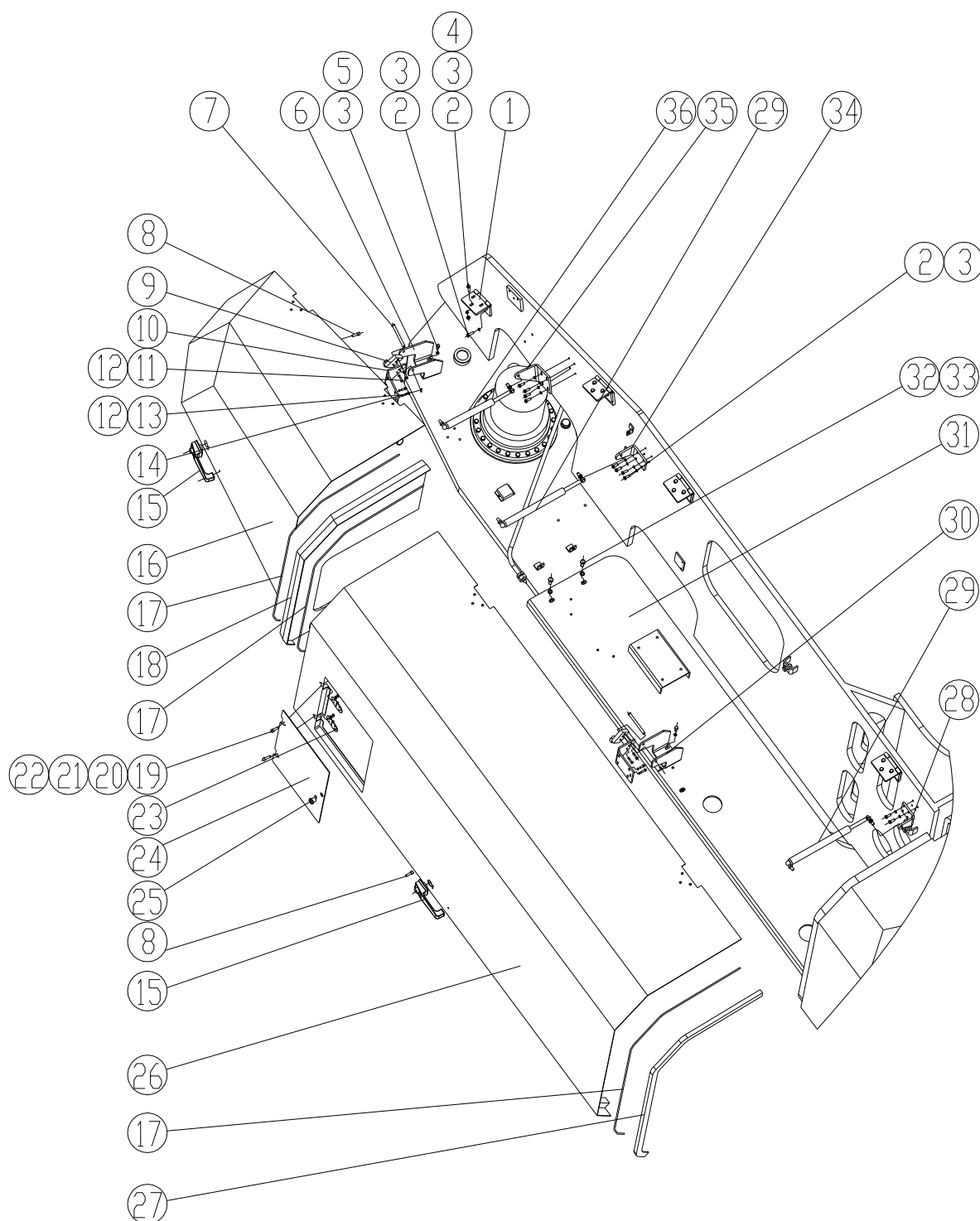


Fig 2-7

## Turntable Assembling

Item	Part Number	Qty.	Description	Memo
1	8300-310040-0001	4	Gemel	
2	4110011	36	BoltM8*25-8.8	
3	4501005	42	Lock Washer8	
4	4308005	24	NutM8-8	
5	4110009	6	BoltM8*16-8.8	
6	8420-310000-1060	2	Bracket	
7	4709020	2	Pin B10*110	
8	4152042	2	BoltM8*30-8.8	
9	5829021	2	Lock	
10	8420-310000-1050	2	Board	
11	4110006	4	BoltM6*20-8.8	
12	4501004	12	Lock Washer6	
13	4110005	8	Bolt M6*16-8.8	
14	4701001	2	Pin 3.2*16	
15	5829019	2	Knob	
16	8420-310180-0000	1	Hood	
17	5410002	5m	Seal	
18	8420-310100-0000	1	Clapboard	
19	4110002	12	BoltM5*16-8.8	
20	4709020	12	Washer 5-200HV	
21	4501003	12	Lock Washer 5	
22	4308003	12	Nut M5-8	
23	5830006	2	Gemel	
24	8420-310000-1020	1	Door	
25	5829003	1	Lock	

## Turntable Assembling

---

Item	Part Number	Qty.	Description	Memo
26	8420-310040-0000	1	Hood	
27	8420-310000-1150	1	Board	
28	8420-310000-1030	1	Bracket	
29	6602018	1	Spring Gas	
30	8420-310000-1070	1	Bracket	
31	8420-310160-0000	1	Bracket	
32	4110022	4	Bolt M12*25-8.8	
33	4501007	4	Lock Washer 12	
34	8420-310000-1030	1	Bracket	
35	8420-310000-1110	1	Bracket	
36	6602020	1	Spring Gas	

Chart 2-7

## 2.8 Cover Board Installation

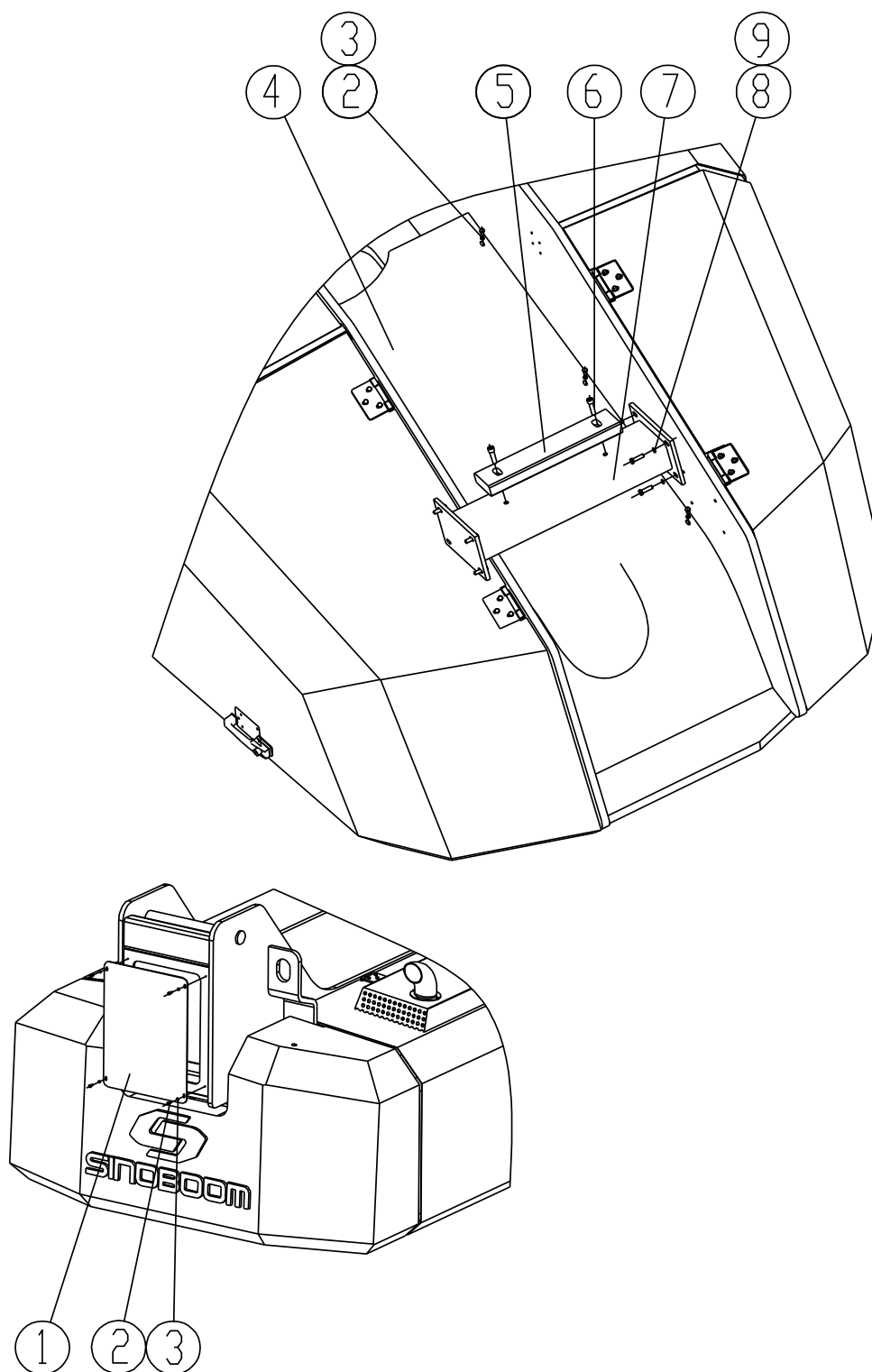


Fig 2-8

## Turntable Assembling

---

Item	Part Number	Qty.	Description	Memo
1	8420-310000-1010	1	Cover Board	
2	4152007	8	Screw M*20-8.8	
3	4501005	8	Lock Washer 8	
4	8420-310000-1120	1	Dust Board	
5	8420-470000-1020	1	Pillow	
6	4152037	2	Screw M12*40-8.8	
7	8420-470060-0000	1	Bracket	
8	4110018	4	Bolt M10*30-8.8	
9	4501006	4	Lock Washer 10	

Chart 2-8



## 2.9 Oil Box Installation

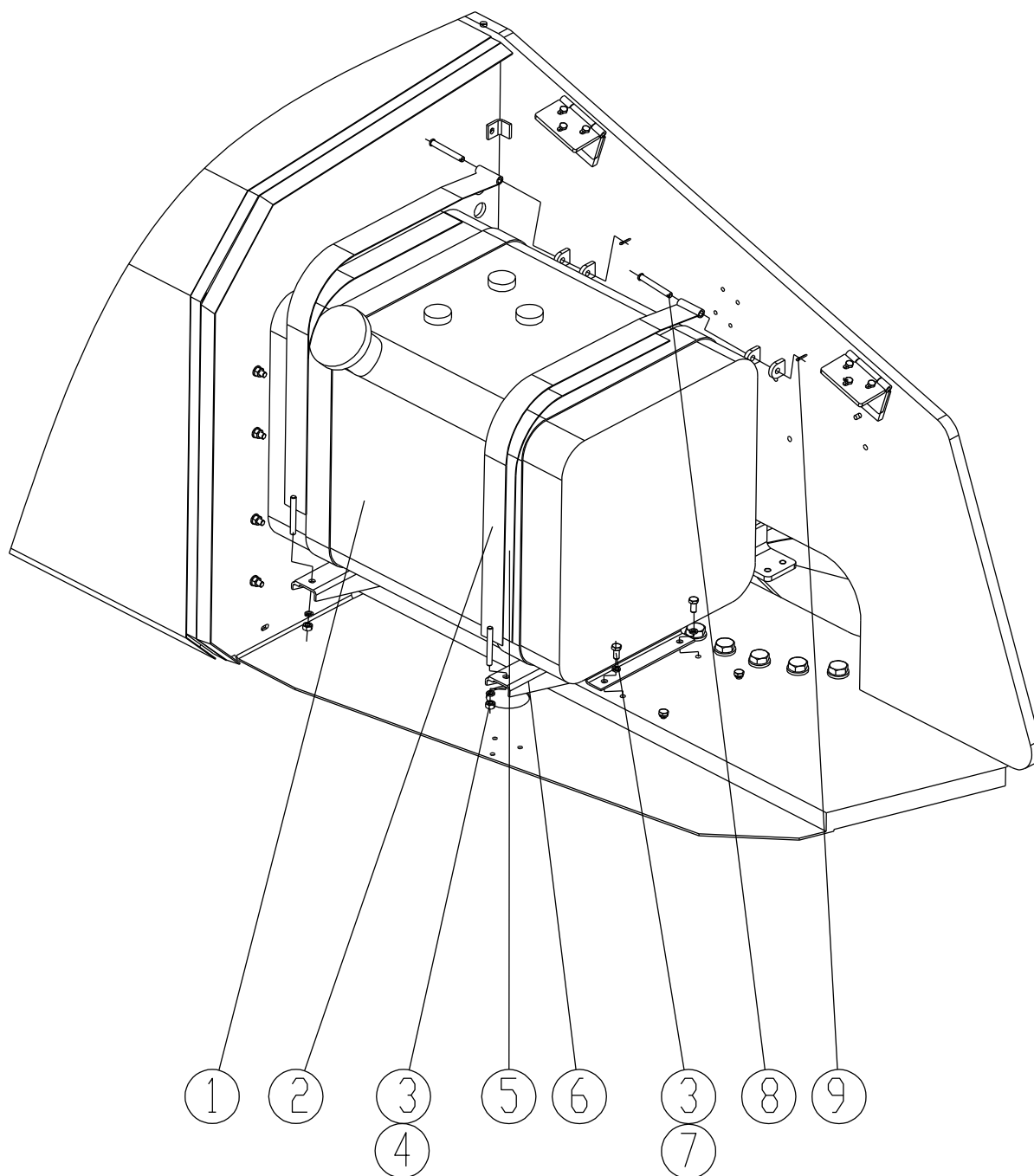


Fig 2-9

## Turntable Assembling

---

Item	Part Number	Qty.	Description	Memo
1	8420-370040-0000	1	Oil Box	
2	8420-370020-0000	2	Drawstring	
3	4501006	10	Lock Washer10	
4	4308006	2	NutM10-8	
5	8420-370000-1010	2	Cincture	
6	8420-370060-0000	2	bracket	
7	4110014	2	Bolt M10*20-8.8	
8	4701001	2	Pin 3.2*16	
9	4709013	2	Pin B10*80	

Chart 2-9

## 2.10 Engine Bracket Installation

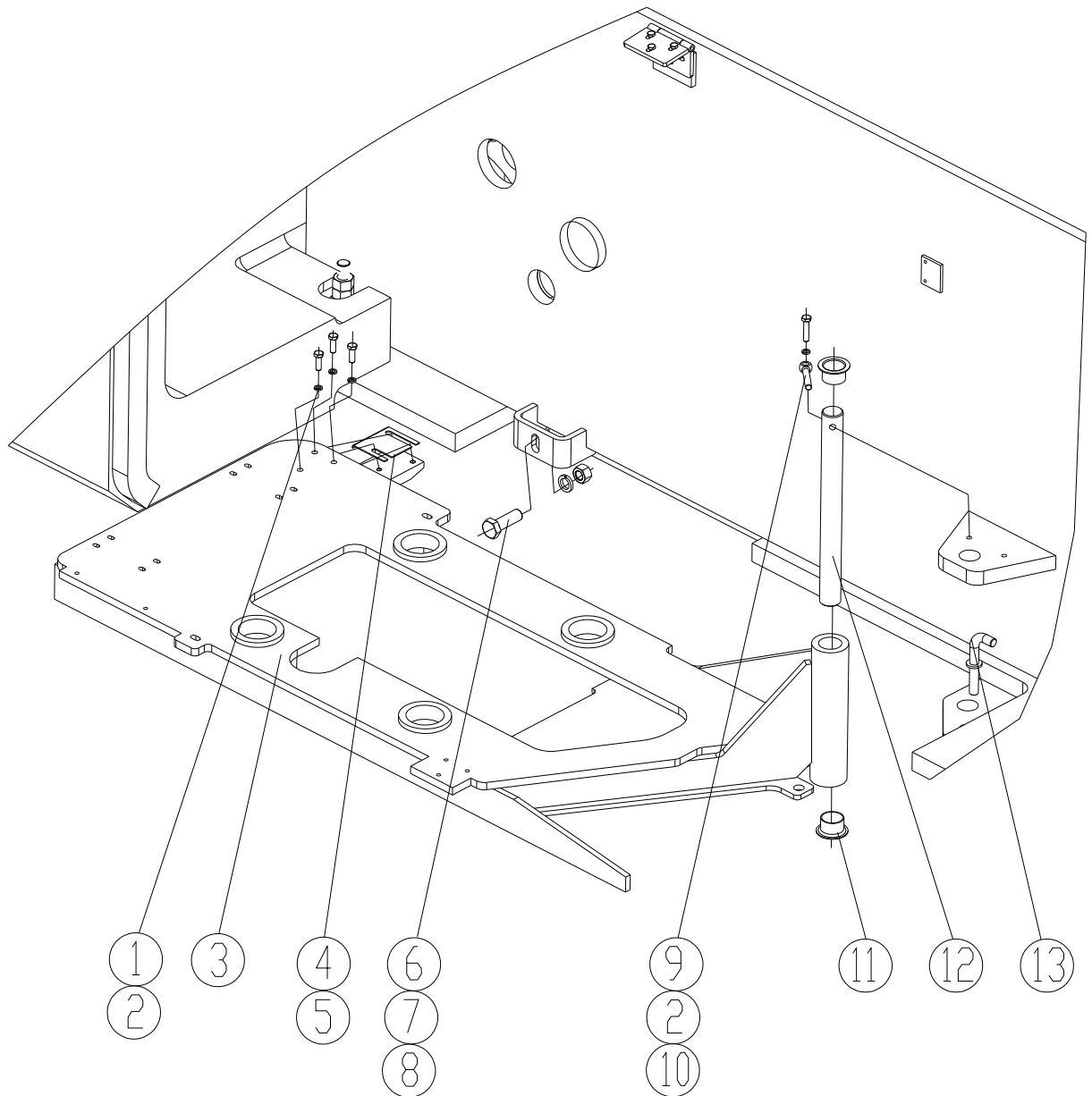


Fig 2-10

## Turntable Assembling

---

Item	Part Number	Qty.	Description	Memo
1	4110018	3	Bolt M10*30-8.8	
2	4501006	4	Lock Washer10	
3	8420-470020-0000	1	Engineer Bracket	
4	8420-470000-1010	1	Pillow	
5	8300-470000-1080	1	Slide	
6	4110030	1	Bolt M20*65-8.8	
7	4501010	1	Lock Washer 20	
8	4504009	1	Nut M20-8	
9	4110020	1	Bolt M10*35-8.8	
10	8300-280000-1060	1	Pin	
11	5102011	1	Bearing 40*44*30	
12	8300-470000-1121	1	Axis	
13	8300-470060-0000	1	Safety Pin	

Chart 2-10

## 2.11 Exhausting system assembling

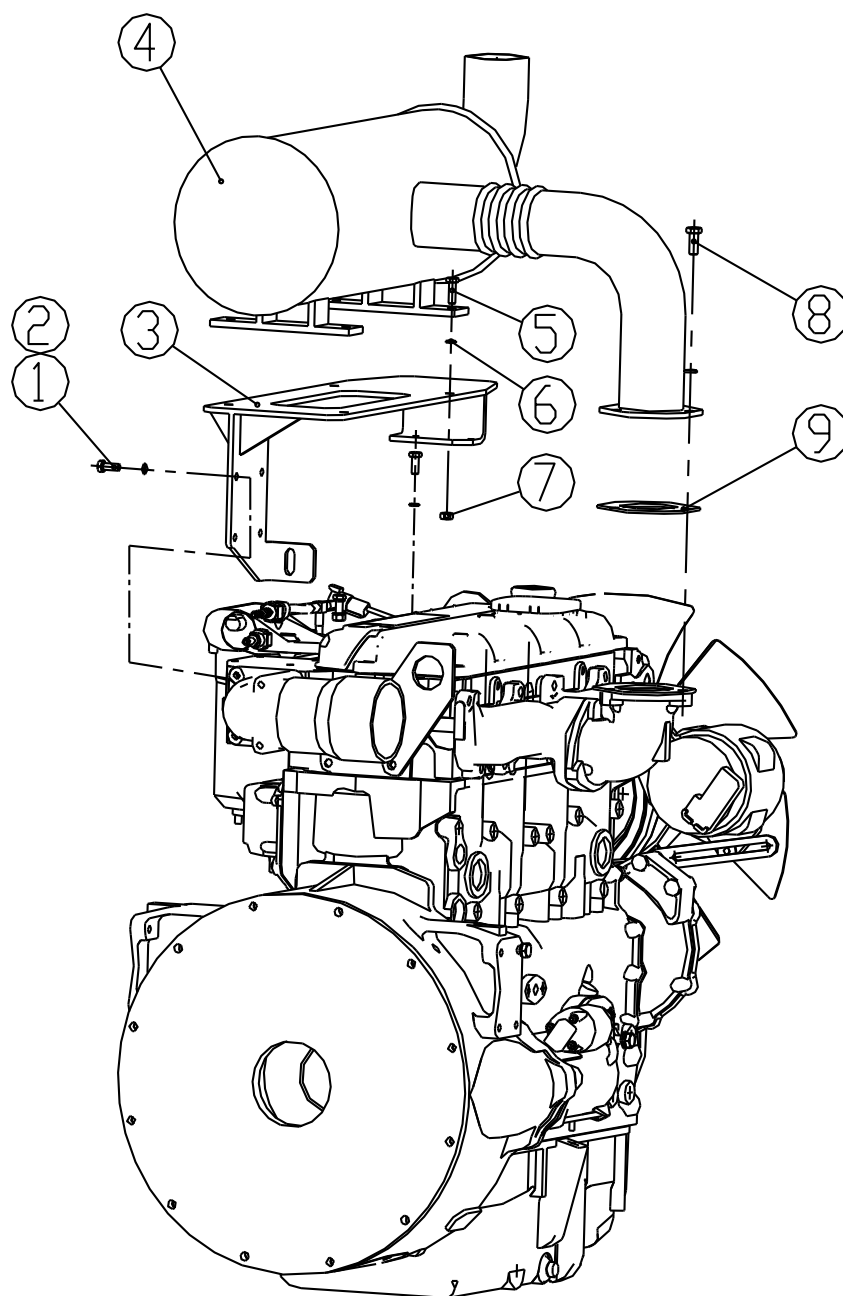


Fig 2-11

## Turntable Assembling

---

Item	Part Number	Qty.	Description	Memo
1	4110009	6	Blot M8*16-8.8	
2	4501005	4	Nut M8-8	
3	8420-130040-0000	1	Bracket	
4	8420-130020-0000	1	Muffler	
5	4110018	4	Blot M10*30-8.8	
6	4501006	7	Lock Washer10	
7	4308006	7	Nut M10-8	
8	4110033	3	Blot M10*40-8.8	
9	8420-130000-1010	1	Board	

Chart 2-11

## 2.12 Intake system assembling

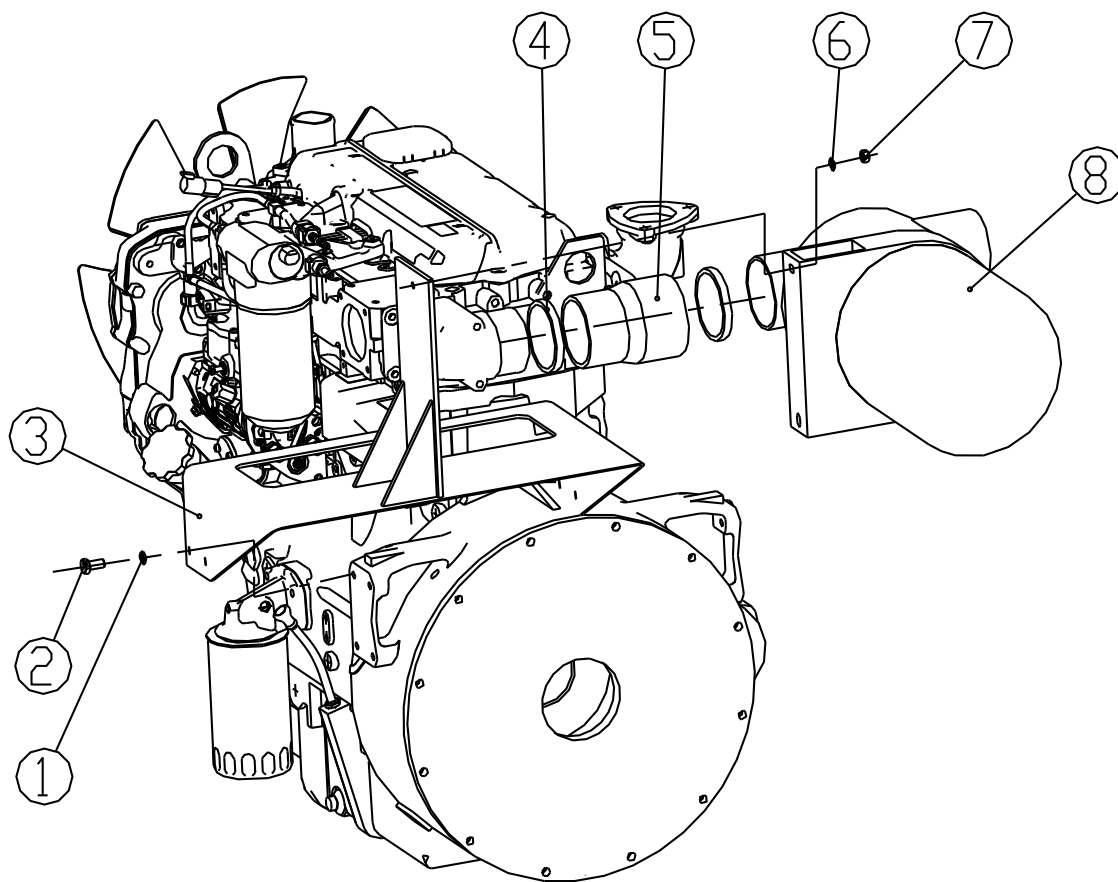


Fig 2-12

Item	Part Number	Qty.	Description	Memo
1	4110014	4	Blot M10*20-8.8	
2	4501006	4	Lock Washer8	
3	8420-120020-0000	1	Bracket	
4	5555009	2	Clamp	
5	8420-120000-1010	1	Rubber pipe	
6	4110011	2	ScrewM8*25-8.8	
7	4501005	2	Lock Washer8	
8	G082526	1	Air clean	

Chart 2-12

## 2.13 Engine assembling

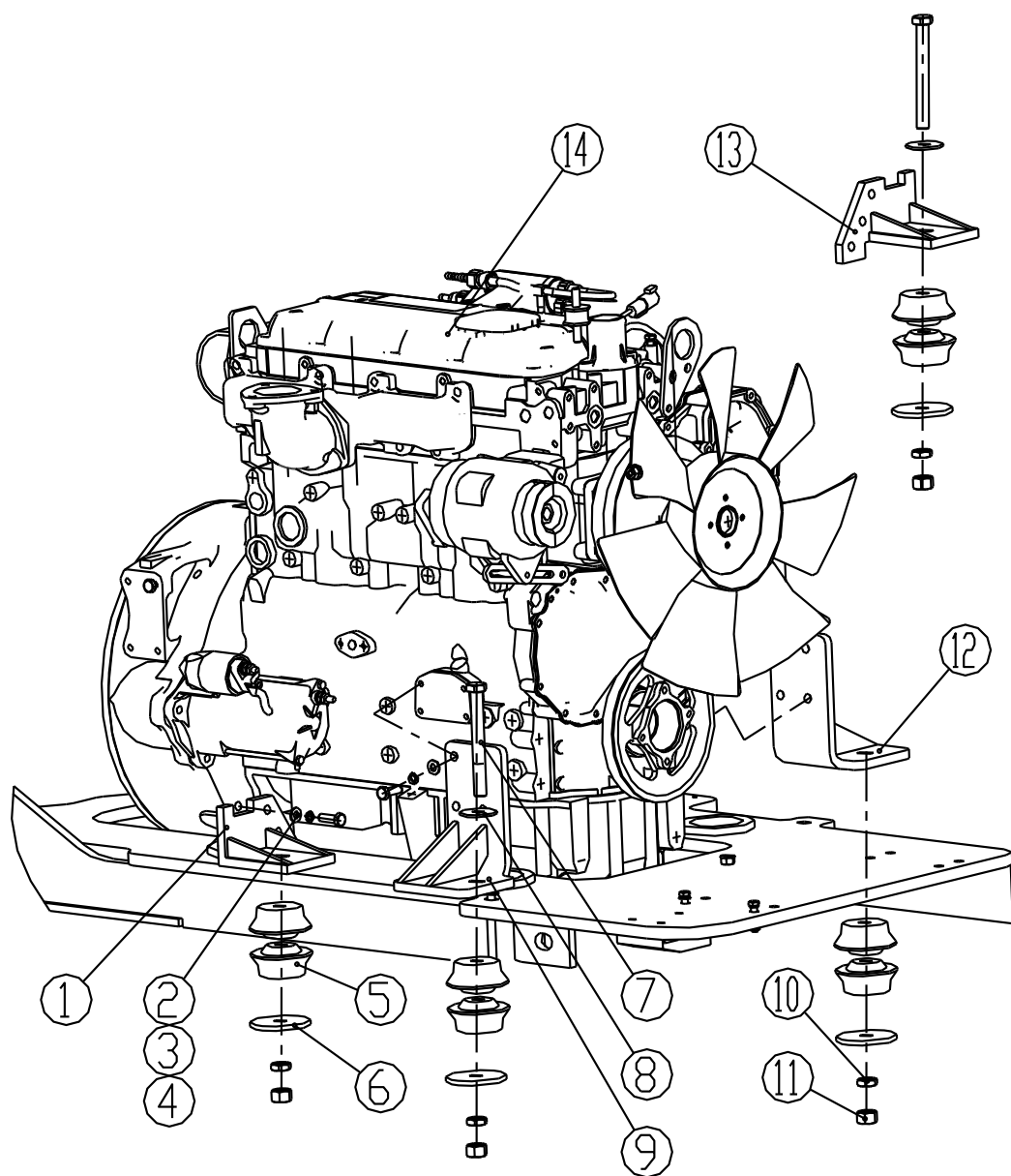


Fig 2-13



## Turntable Assembling

---

Item	Part Number	Qty.	Description	Memo
1	8420-100020-0000	1	Install seat	
2	4110018	14	Blot M10*30-8.8	
3	4501006	14	Flat Washer 10	
4	4504005	14	Lock Washer 10	
5	20Y-01-12222	8	Shock absorber	
6	7150-100000-1010	4	Board	
7	4109033	4	Blot M16*140-8.8	
8	4533003	4	Flat Washer 16	
9	8300-101020-0000	1	Install seat	
10	4310006	4	Nut M16-8	
11	4308009	4	Nut M16-8	
12	4110014	1	Install seat	
13	4501005	1	Install seat	

Chart 2-13

## 2.14 Cooling system assembling

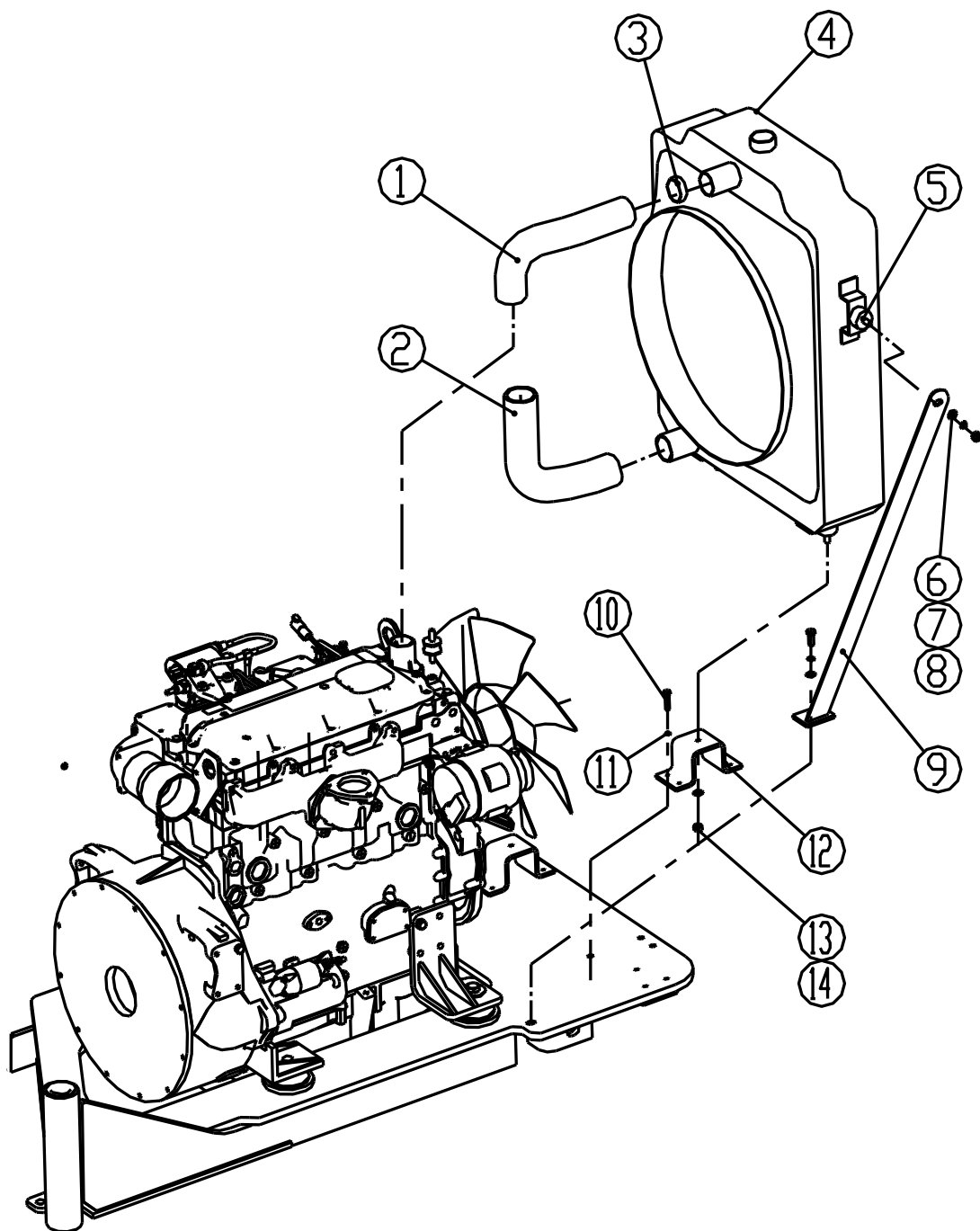


Fig 2-14

## Turntable Assembling

Item	Part Number	Qty.	Description	Memo
1	8420-140000-1020	1	Rubber pipe	
2	8420-140000-1030	1	Rubber pipe	
3	4533001	4	Clamp	
4	HZ1254-000	1	Radiator	
5	6600006	4	Shock blanket	
6	4110033	2	Blot M10*40-8.8	
7	4501006	12	Flat Washer 10	
8	4504005	12	Lock Washer 10	
9	7180-140040-0000	1	Left fixed support	
	7180-140020-0000	1	Right fixed support	
10	4110043	8	Blot M8*35-8.8	
11	4501005	8	Lock Washer 8	
12	7180-140000-1010	1	Bracket	
13	4308005	8	Nut M8-8	
14	4504004	8	Flat Washer 8	

Chart 2-14

### 3 Boom

#### 3.1 Boom Wipers Installation

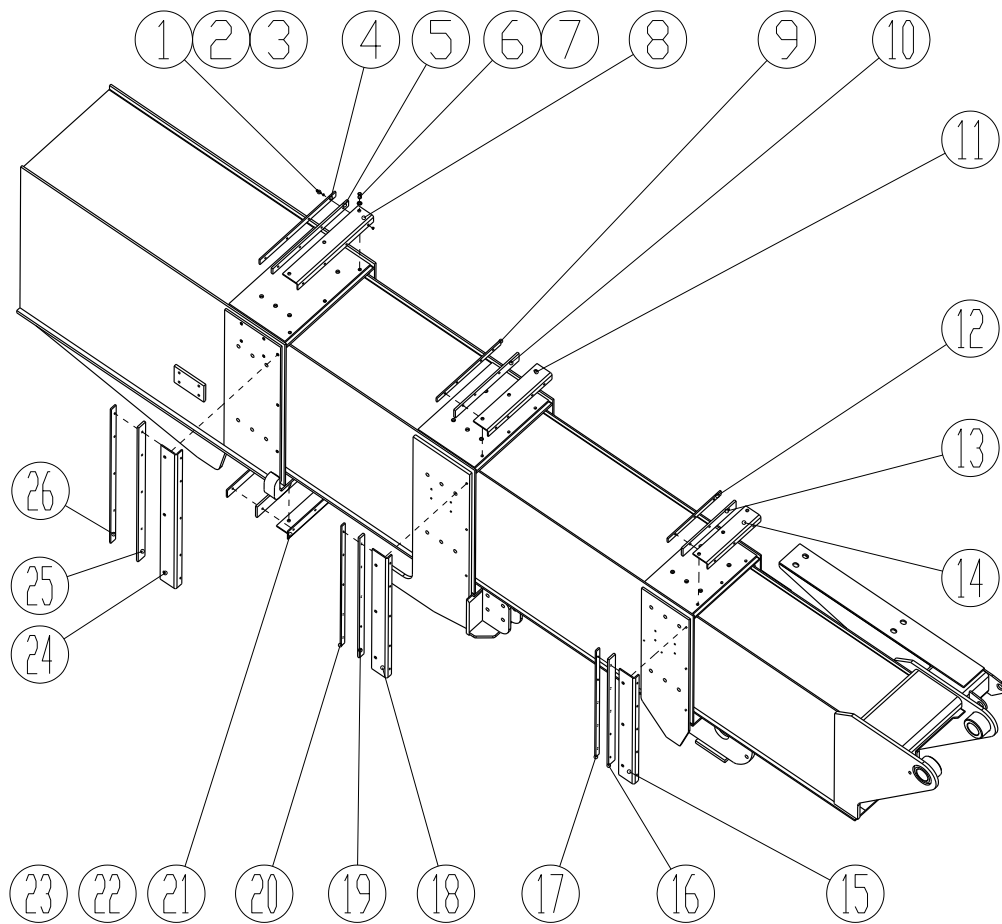


Fig 3-1

## Boom Components

---

Item	Part Number	Qty.	Description	Memo
1	4110032	46	Blot M5*25-8.8	
2	4501003	46	Lock Washer 5	
3	4308003	46	Nut M5-8	
4	8361-800020-1150	1	Sheet	
5	8361-800020-1140	1	Rubber Sheet	
6	4110010	30	Blot M8*20-8.8	
7	4501005	30	Lock Washer 8	
8	8361-800020-1130	1	Bendt Sheet	
9	8361-800020-1180	1	Sheet	
10	8361-800020-1170	1	Rubber Sheet	
11	8361-800020-1160	1	Bendt Sheet	
12	8361-800020-1210	1	Sheet	
13	8361-800020-1200	1	Rubber Sheet	
14	8361-800020-1190	1	Bendt Sheet	
15	8361-800020-1070	2	Bendt Sheet	
16	8361-800020-1080	2	Rubber Sheet	
17	8361-800020-1090	2	Sheet	
18	8361-800020-1040	2	Bendt Sheet	
19	8361-800020-1050	2	Rubber Sheet	
20	8361-800020-1060	2	Sheet	
21	8420-800020-1040	1	Bendt Sheet	
22	8361-800020-1110	1	Rubber Sheet	
23	8361-800020-1120	1	Sheet	
24	8420-800020-1010	2	Bendt Sheet	
25	8420-800020-1020	2	Rubber Sheet	
26	8420-800020-1030	2	Sheet	

Chart 3-1

### 3.2 Towline System

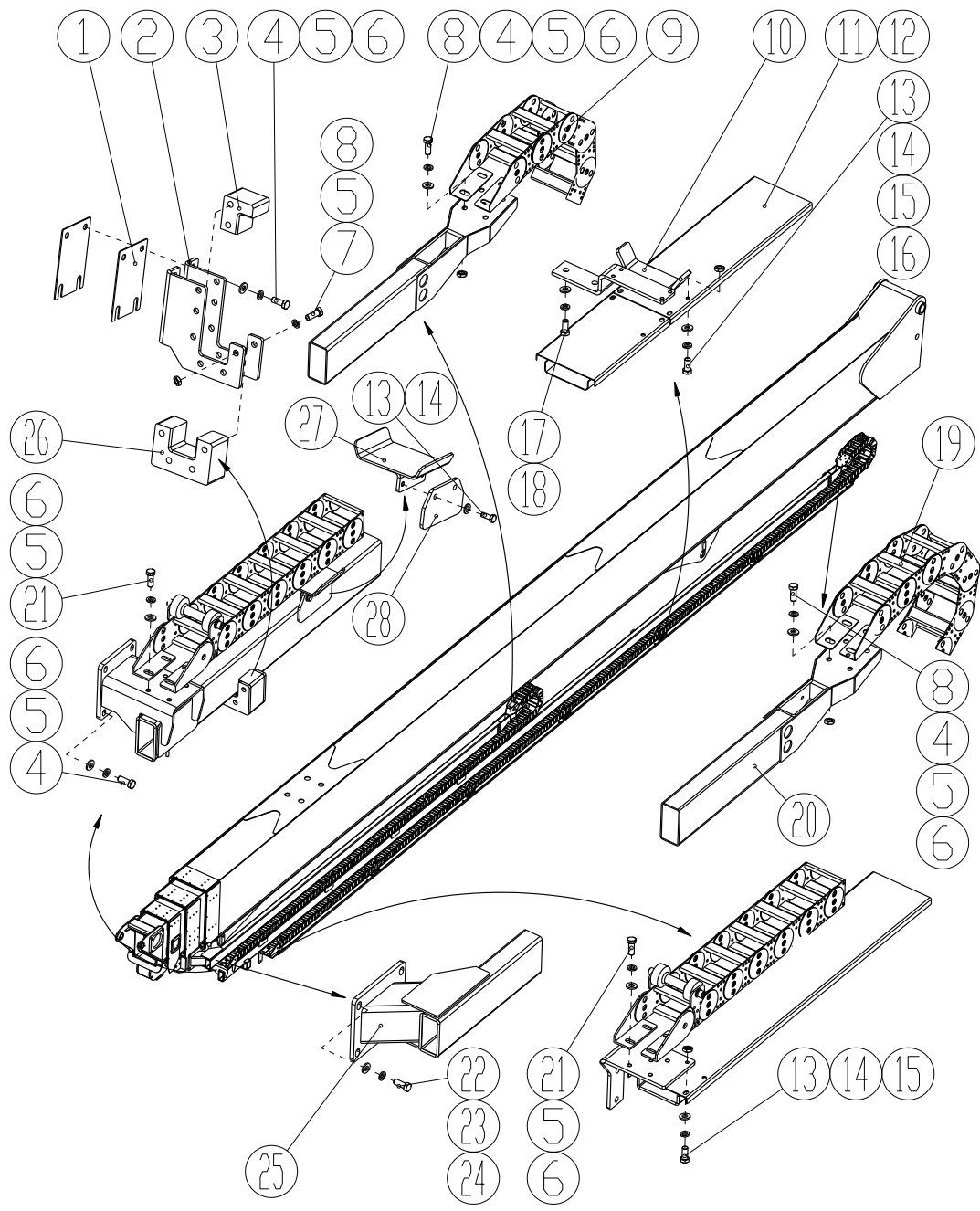


Fig 3-2

## Boom Components

Item	Part Number	Qty.	Description	Memo
1	8420-820000-1050	2	Packing piece	
2	8420-820000-1080	2	Bendt Sheet	
3	8420-820000-1060	1	Slipper	
4	4110016	16	Blot M10*25-8.8	
5	4501006	30	Lock Washer 10	
6	4504005	24	Lock Washer 10-200HV	
7	4109021	6	Blot M10x80-8.8	
8	4308006	14	Nut M10-8	
9	6601017	1	Drag chain	
10	8420-820000-1010	5	Backing	
11	8420-820000-1090	6	Channel plate	
12	8420-820080-0000	6	Channel plate	
13	4110009	58	Blot M8*16-8.8	
14	4501005	58	Lock Washer8	
15	4504004	48	Lock Washer8-200HV	
16	4308005	24	Nut M8-8	
17	4110022	14	Blot M12*25-8.8	
18	4501007	14	Lock Washer 12	
19	6601016	2	Drag chain	
20	8420-820040-0000	1	Guide pipe	
21	4110014	8	Blot M10*20-8.8	
22	4110026	4	Blot M14*35-8.8	
23	4501008	4	Lock Washer 14	
24	4504007	4	Lock Washer 14-200HV	
25	8420-820020-0000	1	Guide pipe	
26	8420-820000-1070	1	Slipper	
27	8420-820060-0000	5	Backing	
28	8420-820040-1050	5	Sheet	

Chart 3-2

### 3.3 Boom Assembly

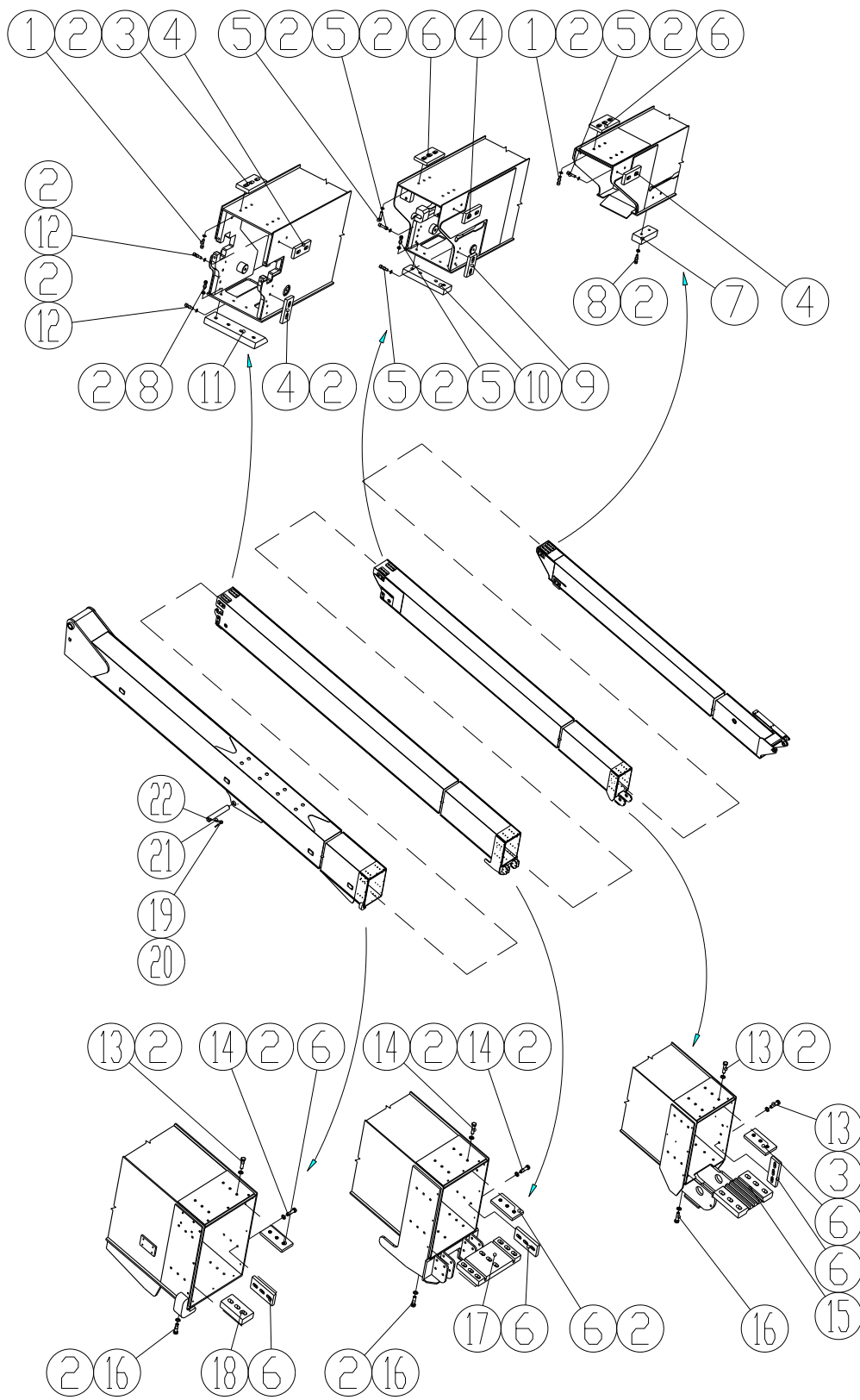


Fig 3-3



## Boom Components

Item	Part Number	Qty.	Description	Memo
1	4152016	12	Screw M10*25-8.8	
2	4501006	123	Lock Washer 10	
3	8300-800080-0000	1	Slipper	
4	8361-800040-00000	10	Slipper	
5	4152015	22	Screw M10*20-8.8	
6	8300-800020-0000	22	Slipper	
7	8361-800000-1020	2	Slipper	
8	4152017	8	Screw M10*30-8.8	
9	8361-800160-0000	2	Slipper	
10	8361-800080-0000	1	Slipper	
11	8361-800060-0000	1	Slipper	
12	4152029	8	Screw M10*45-8.8	
13	GB/T5783-2000	24	Blot M10*25-8.8	
14	4110016	36	Blot M10*30-8.8	
15	8361-800140-0001	1	Slipper	
16	4110033	21	Blot M10*40-8.8	
17	8361-800120-0000	1	Slipper	
18	8361-800100-0000	2	Slipper	
19	4110028	1	Blot M16*50-8.8	
20	4501009	1	Lock Washer 16	
21	8300-470000-1090	1	Lock Rod End	
22	8300-470000-1111	1	Pivot Pin	

Chart 3-3

### 3.4 Telescopic Construction

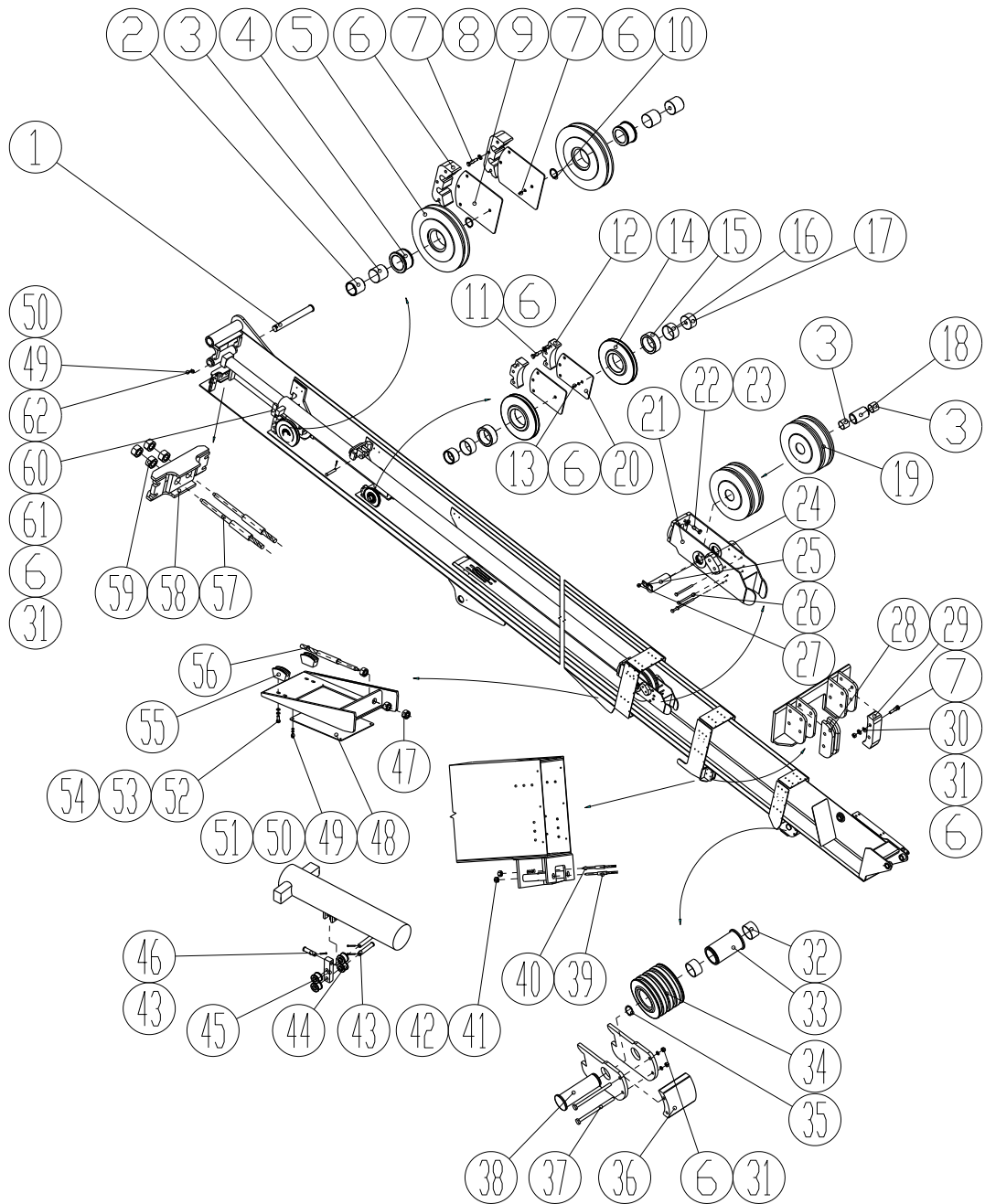


Fig 3-4

## Boom Components

Item	Part Number	Qty.	Description	Memo
1	8361-810000-1130	1	Pivot Pin	
2	8361-810000-1160	2	Barrel	
3	5102014	2	Bearing 60*65*50	
4	8361-810160-1021	2	Barrel	
5	8361-810160-1011	2	Pulley	
6	4501006	30	Lock Washer 10	
7	4109021	14	Blot M10*80-8.8	
8	8361-810000-1060	2	Barrier block3	
9	8361-810000-1110	2	Pulley binder Sheet	
10	4524008	1	Bead flange 85	
11	4109003	10	Blot M10*55-8.8	
12	8361-810000-1051	2	Barrier block2	
13	4110018	2	Blot M10*30-8.8	
14	8361-810180-1011	2	Pulley	
15	8361-810180-1021	2	Barrel	
16	5102023	2	Bearing 60*65*30	
17	8361-810000-1170	2	Barrel	
18	8361-810122-1020	1	Barrel	
19	8361-810122-1010	1	Pulley	
20	8361-810000-1120	2	Pulley binder Sheet	
21	8361-810121-0001	1	Backing	
22	4152031	6	Screw M16*40-8.8	
23	4501009	6	Lock Washer 16	
24	8361-810120-1031	1	Pivot Pin	
25	8300-810060-1010	1	Sheet	
26	8361-810120-1040	4	Homemade blot	
27	4110009	2	Blot M8*16-8.8	
28	8361-810000-1030	2	Wheel	
29	8361-810000-1020	2	Barrier block1	
30	4308006	6	Nut M10-8	
31	4504005	30	Lock Washer 10-200HV	
32	5102017	2	Bearing 50*55*30	
33	8361-810200-1020	1	Barrel	
34	8361-810000-1010	2	Pulley	

## Boom Components

35	4524006	1	Bead flange 70	
36	8361-810000-1150	1	Barrier block4	
37	8361-810120-1040	2	Homemade Blot	
38	8361-810000-1140	1	Pivot Pin	
39	8361-810080-0000	2	Retractable cable II	
40	8361-810100-0000	4	Exserted cable II	
41	4308016	12	Nut M18-8	
42	4709006	2	Pin B20*120	
43	4701005	3	Pin 5X50	
44	8361-810000-1100	4	Wheel	
45	8361-810000-1090	1	Sheet	
46	4709011	1	Pin B20*80	
47	4308015	6	Nut M27-8	
48	8361-810000-1040	1	Sheet	
49	4110010	6	Blot M8*20-8.8	
50	4501005	6	Lock Washer 8	
51	4504004	4	Lock Washer 8-200HV	
52	4110023	4	Blot M12*30-8.8	
53	4501007	4	Lock Washer 12	
54	4504006	4	Lock Washer 12-200HV	
55	8361-810000-1010	2	Wheel	
56	8361-810040-0000	2	Retractable cable I	
57	8361-810060-0000	2	Exserted cable I	
58	8361-810140-0000	1	Backing	
59	4308014	4	Nut M33-8	
60	8361-810000-1070	2	Briquet	
61	4109003	10	Blot M10*55-8.8	
62	8300-810000-1070	1	Sheet	

Chart 3-4

### 3.5 Folding Arm Assembly

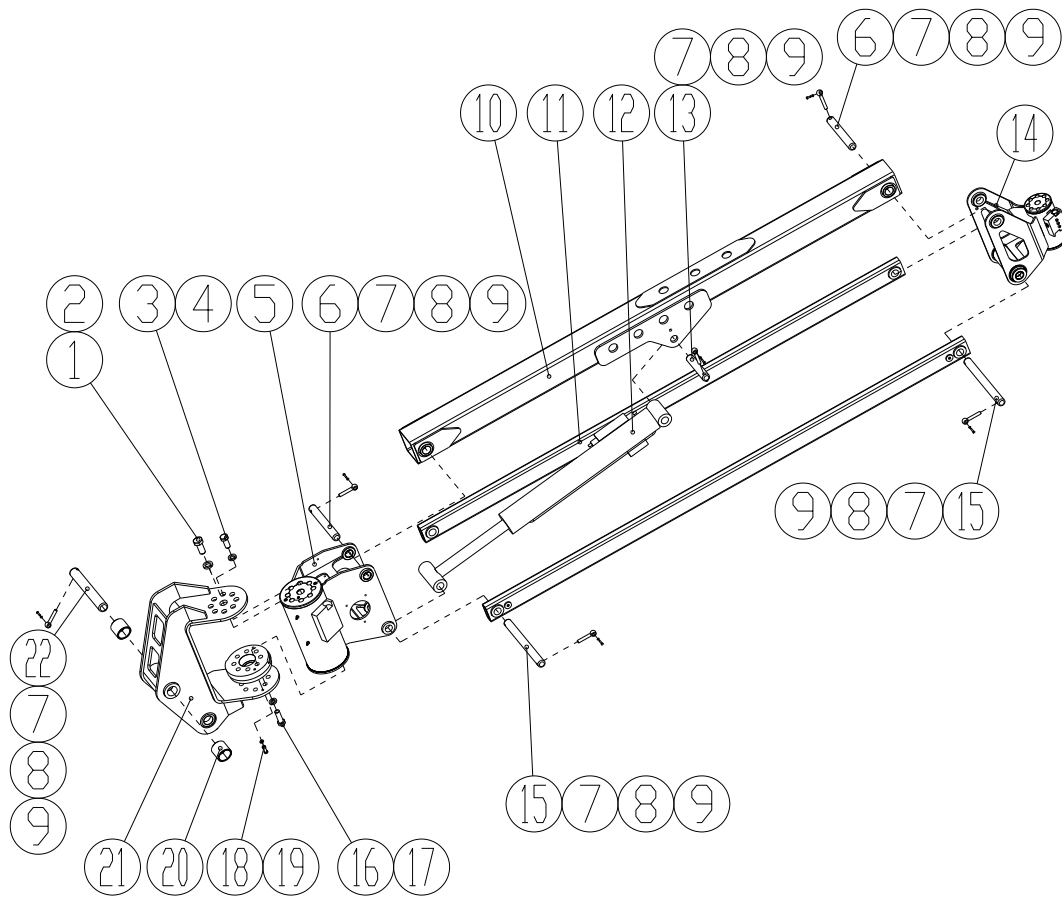


Fig 3-5

## Boom Components

Item	Part Number	Qty.	Description	Memo
1	4110047	8	Blot M20*40-8.8	
2	4501010	8	Lock Washer 20	
3	4110045	1	Blot M30*60-8.8	
4	4501013	1	Lock Washer 30	
5	6208013	1	Angulation motor	
6	8420-830000-1030	2	Pivot Pin	
7	8300-280080-1120	8	Lock Rod End	
8	4110018	9	Blot M10*30-8.8	
9	4501006	10	Lock Washer 10	
10	8420-830040-0000	1	Extension cantilever	
11	8420-830060-0000	1	Horizontal cantilever	
12	8420-580000-0000	2	Cylinder	
13	8420-830000-1060	1	Pivot Pin	
14	6208012	1	Angulation motor	
15	8420-830000-1050	2	Pivot Pin	
16	4109035	8	Blot M16*80-10.9	
17	4501009	8	Lock Washer 16	
18	5102009	2	Bearing 40*44*40	
19	8420-830020-0000	1	Backing	
20	8420-830000-1020	1	Pivot Pin	

Chart 3-5

### 3.6 Working Platform

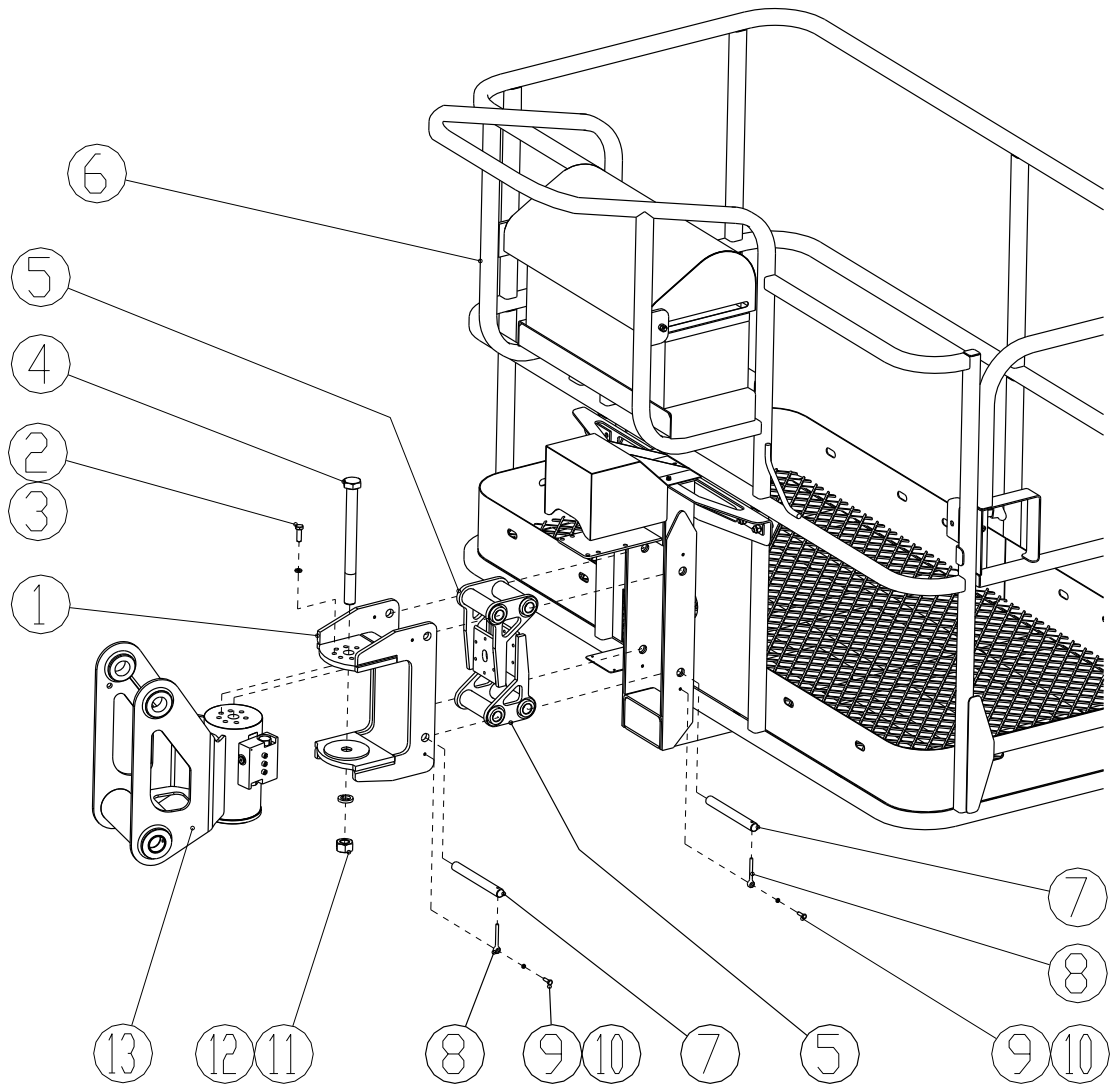


Fig 3-6

## Boom Components

Item	Part Number	Qty.	Description	Memo
1	8250-500020-0000	1	Backing	
2	4110018	8	Blot M10*30-8.8	
3	4501006	8	Lock Washer10	
4	8250-500000-1010	1	Pivot Pin	
5	8300-500080-0000	2	Weighting Backing	
6	8200-501020-0000	1	Console	
7	8300-500000-1010	4	Pivot Pin	
8	8300-500000-1030	4	lock Rod End	
9	4110006	4	Blot M6*20-8.8	
10	4501004	4	Lock Washer 6	
11	4308011	1	Nut M22-8	
12	4501011	1	Lock Washer22	
13	6208012	1	Angulation motor	

Chart 3-6



## 4 Hydraulic

### 4.1 Hydraulic Schematic :

(GTBZ42 4WD)

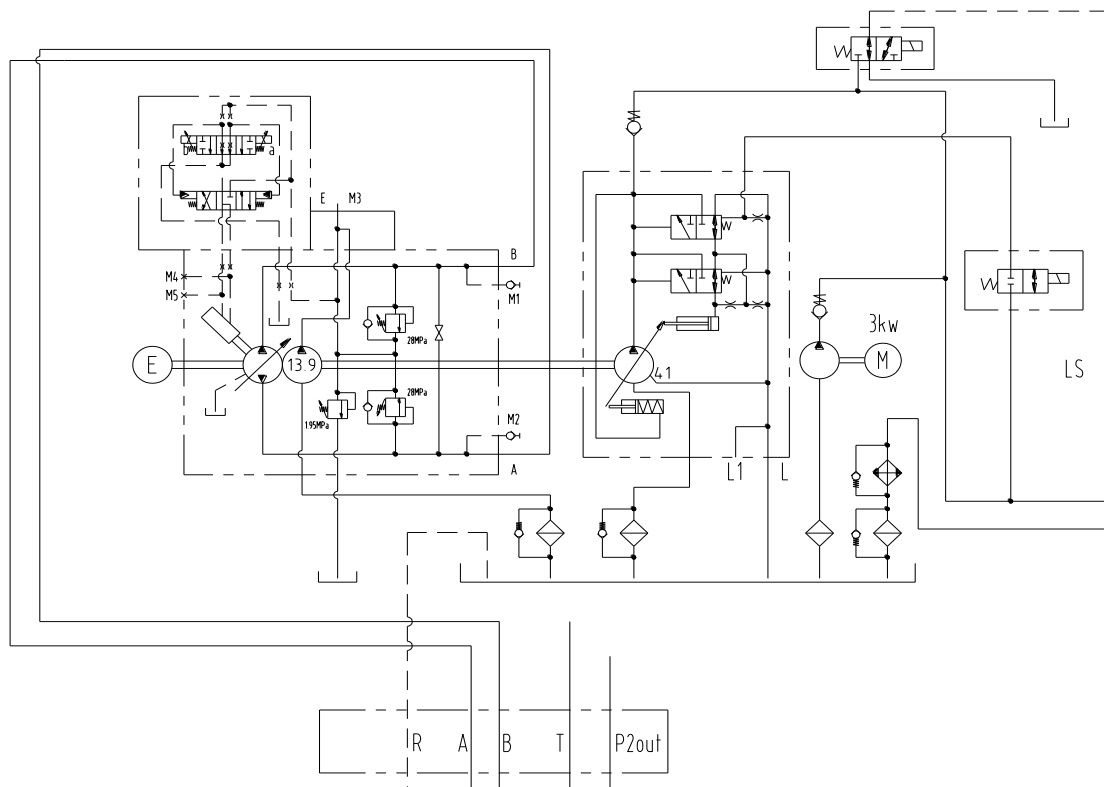


Fig 4-1

(GTBZ42 4WD)

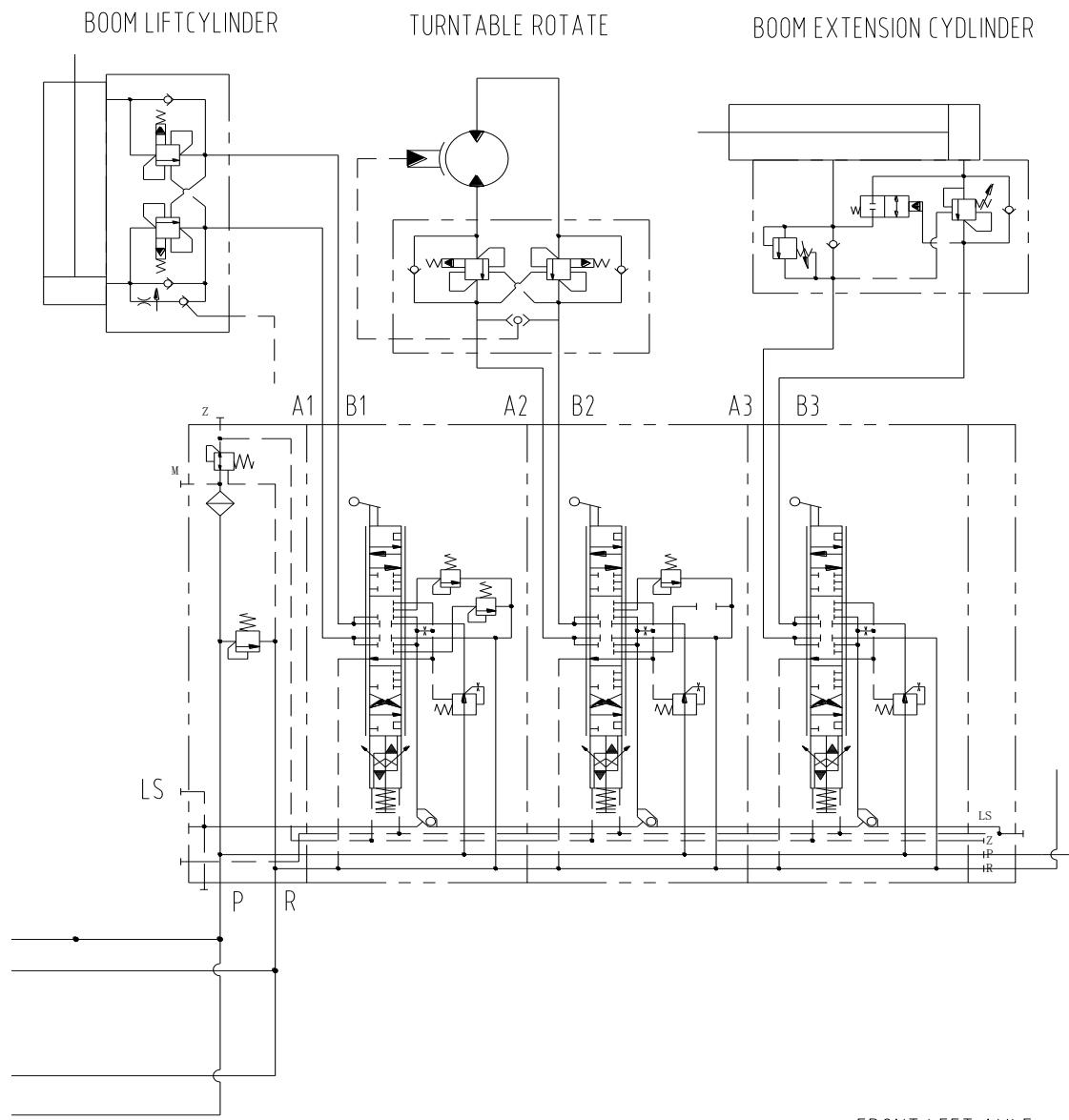


Fig 4-2

(GTBZ42 4WD)

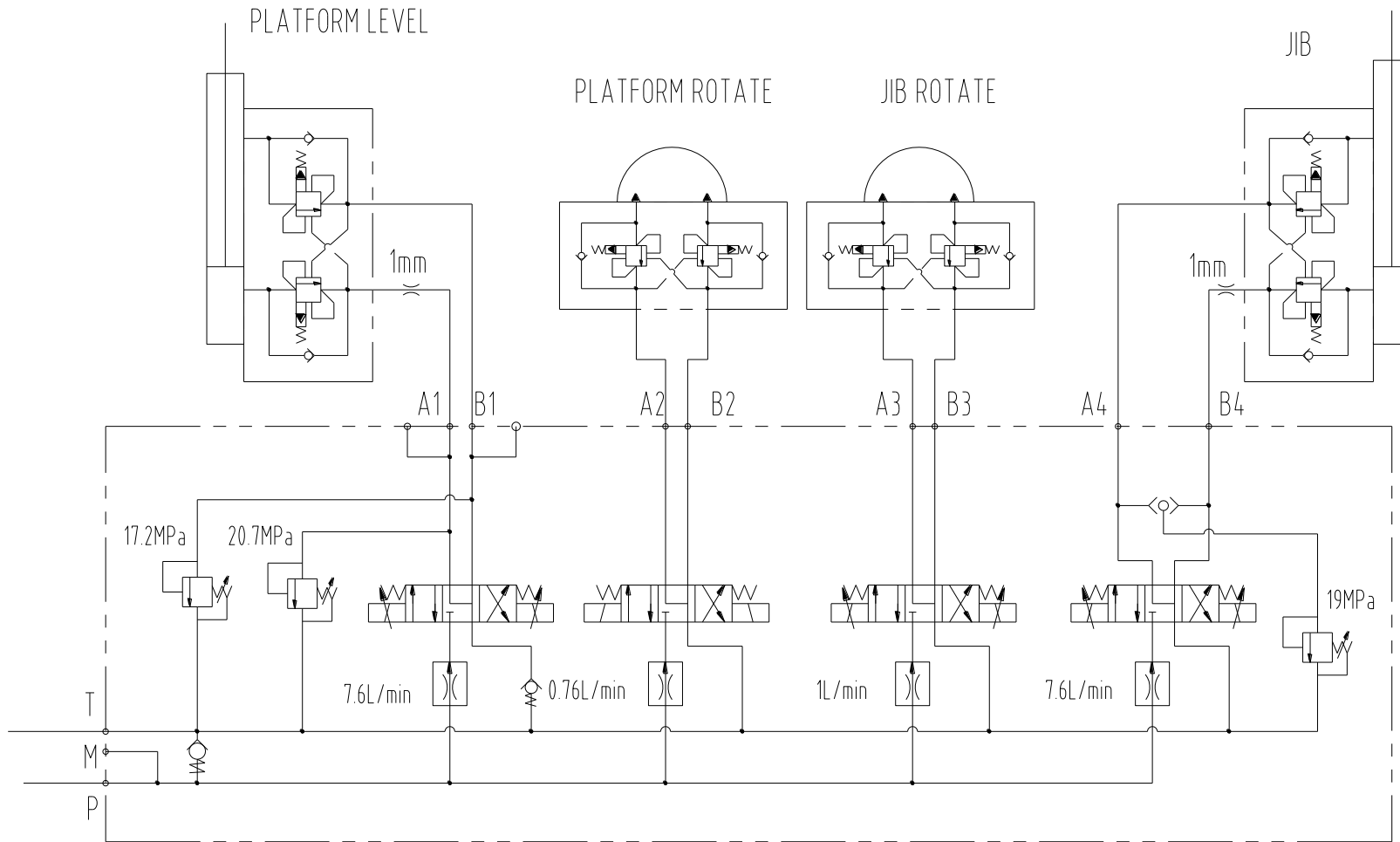


Fig 4-3

(GTBZ42 4WD)

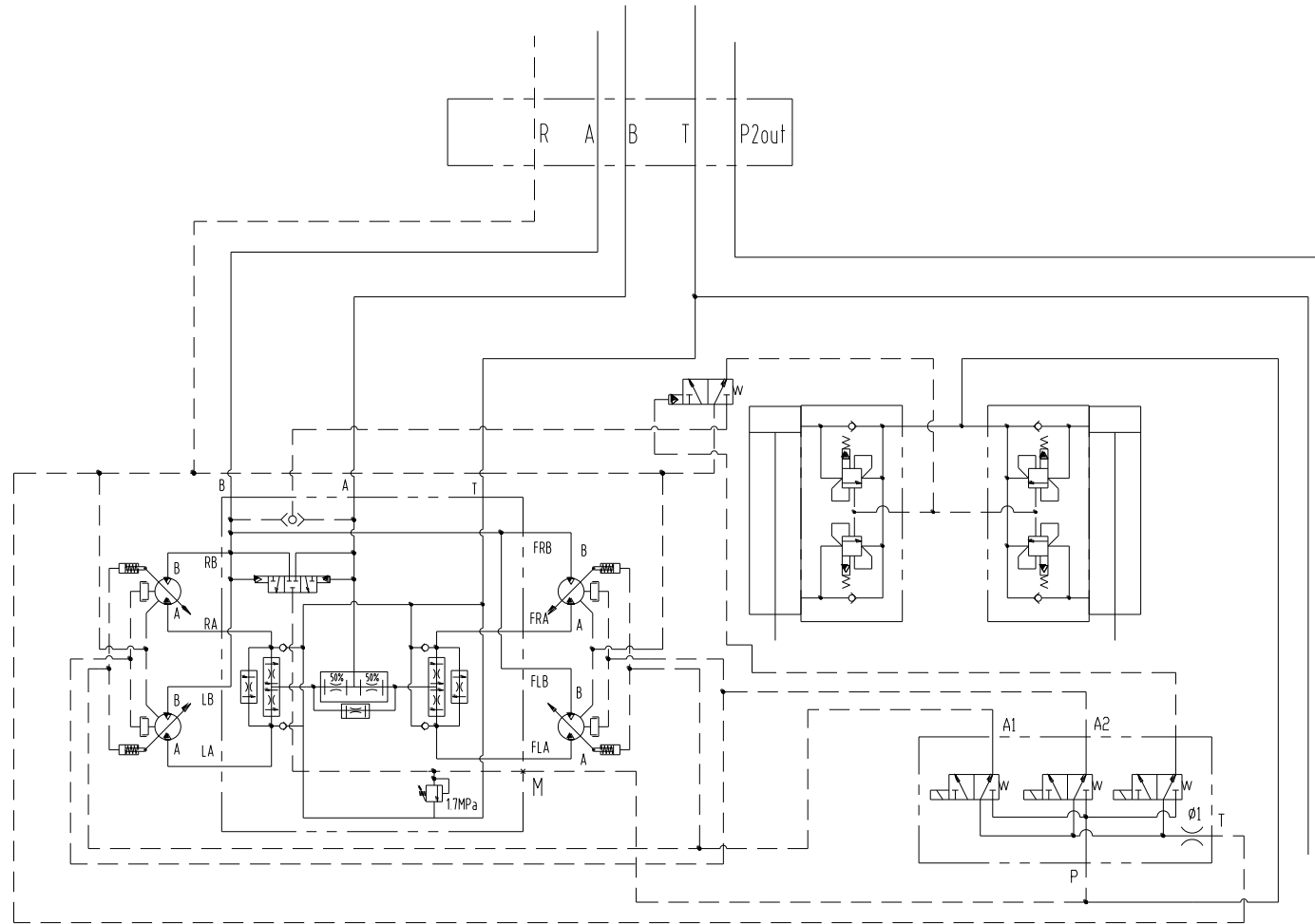


Fig 4-4

GTBZ40 GTBZ42

(GTBZ42 4WD)

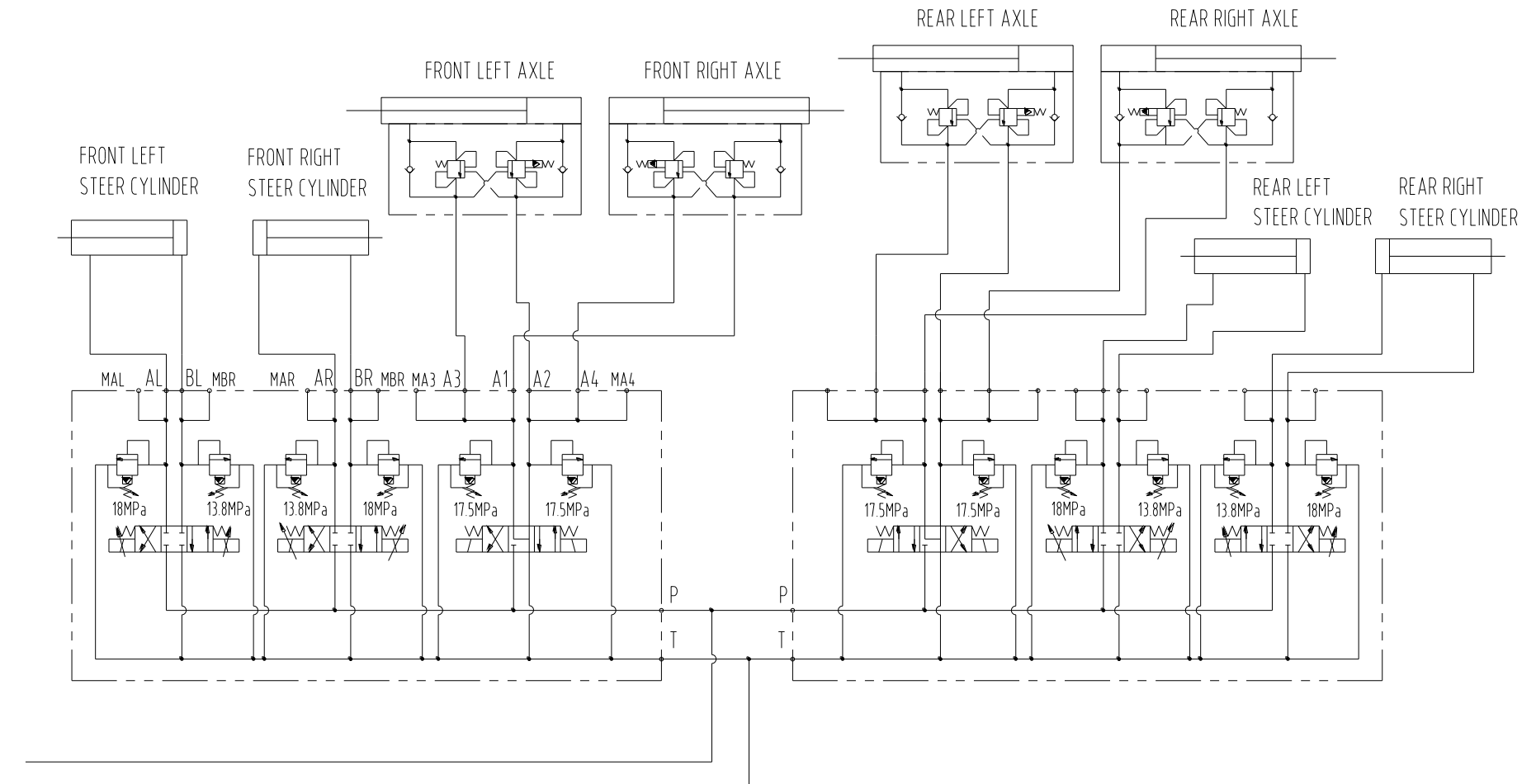


Fig 4-5

## 4.2 Hydraulic Valve

### 4.2.1 DPH-0510A-10 Valve

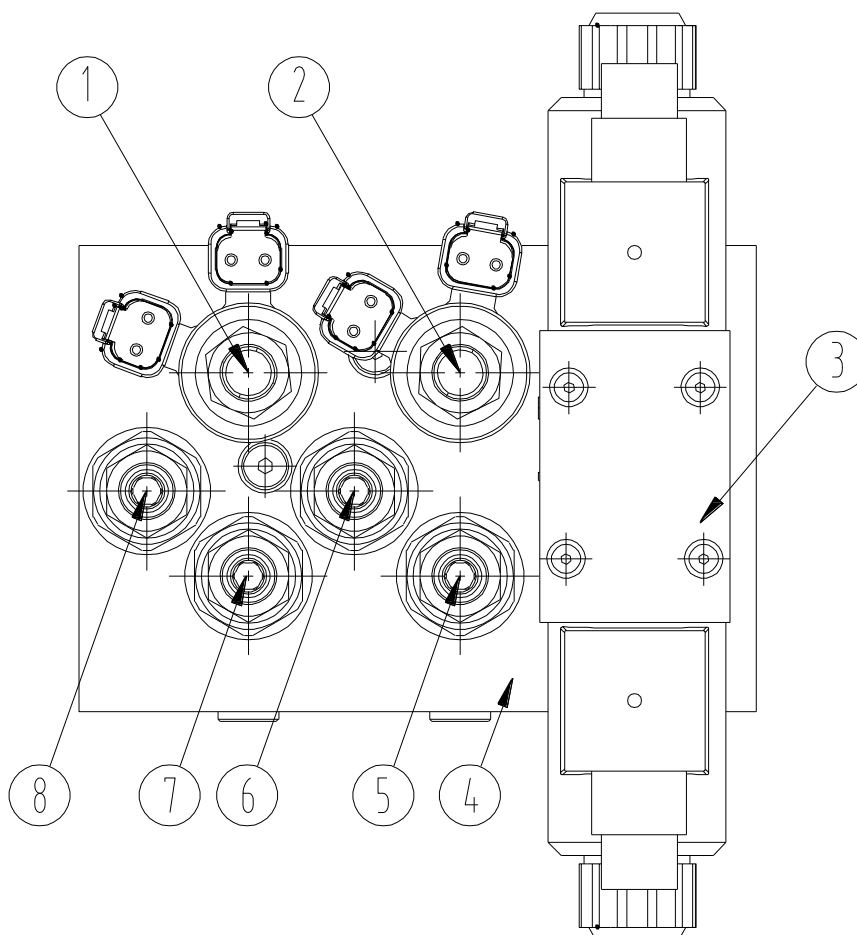


Fig 4-6

Item	Description	Memo
1	Solenoid Operated Directional Valve	
2	Solenoid Operated Directional Valve	
3	Solenoid Operated 3 Position 4 Way Directional Valve	
4	Block	
5	Relief Valve	
6	Relief Valve	
7	Relief Valve	
8	Flow Divider Valve	

Chart 4-1

4.2.2 DPH-0510B-10 Platform Valve

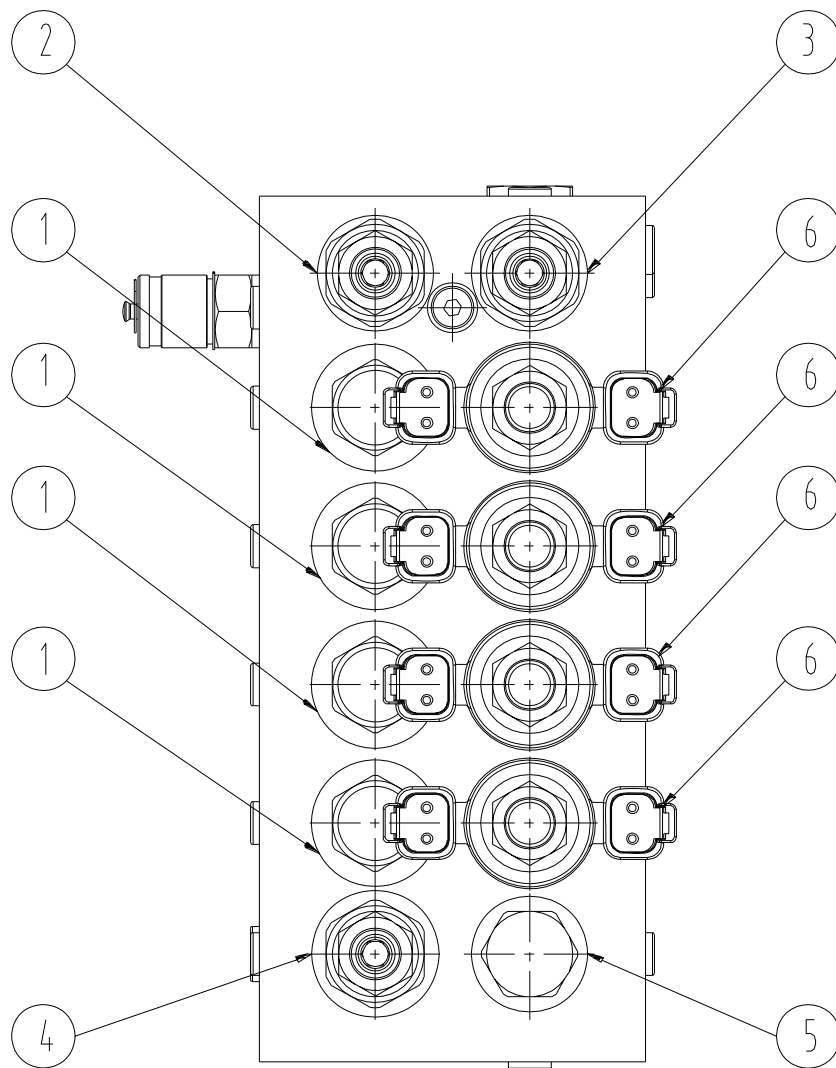


Fig 4-7

Item	Description	Memo
1	Flow valve	
2	Relief Valve M190	
3	Relief Valve M172	
4	Relief Valve M207	
5	Shuttle Valve	
6	Solenoid Operated Directional Valve	

Chart 4-2

4.2.3 ST0708-AC00 Valve

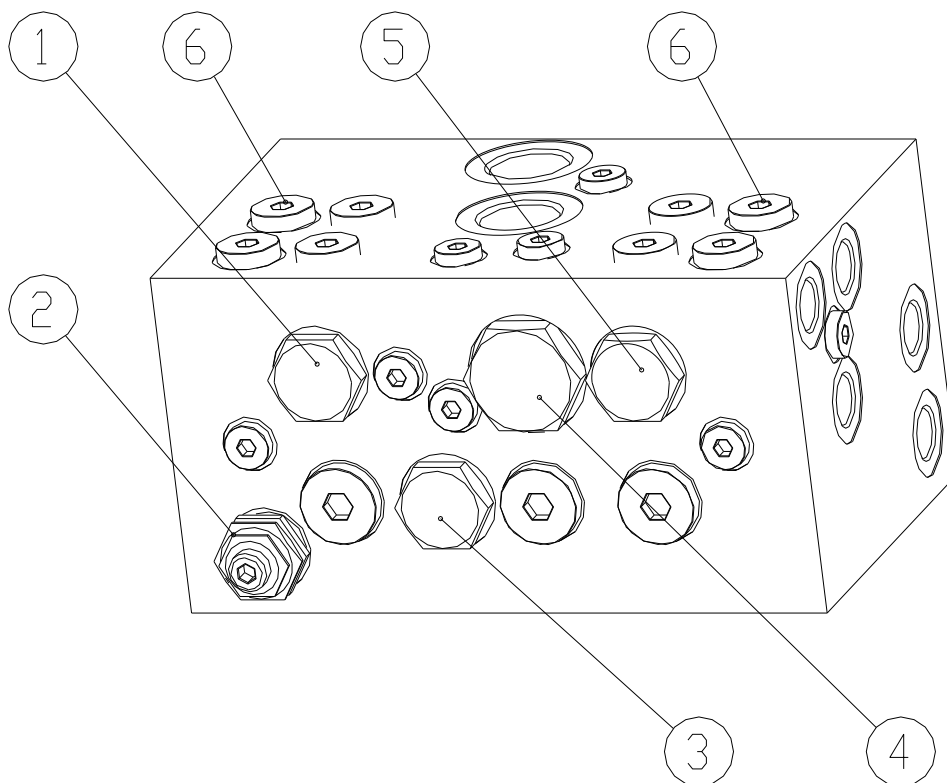


Fig 4-8

Item	Description	Memo
1	Flow allot valve	
2	Relief Valve	
3	Oil Operated Directional Valve	
4	Flow allot valve	
5	Flow allot valve	
6	Solenoid Operated Directional Valve	

Chart 4-3



4.2.4 DPH-0612E-10R2 Flex Counterbalance Valve

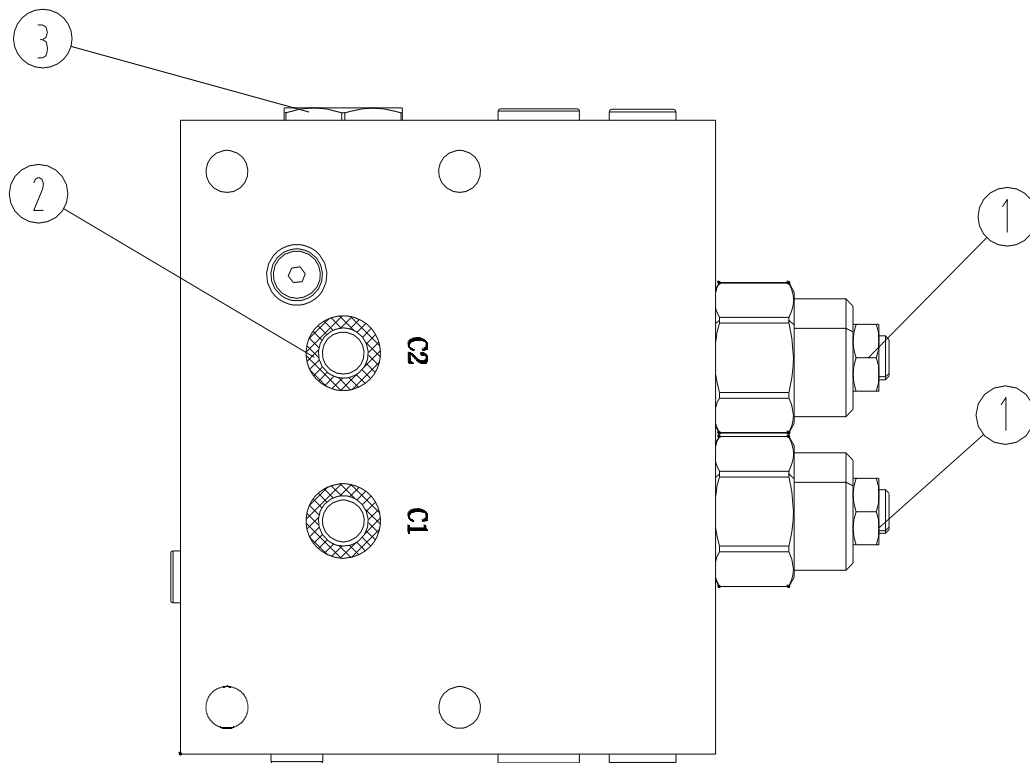


Fig 4-9

Item	Description	Memo
1	Counterbalance Valve	
2	O-Ring seal	
3	Oil Operated Directional Valve	

Chart 4-4

**4.2.5 ST1310-A000 Valve**

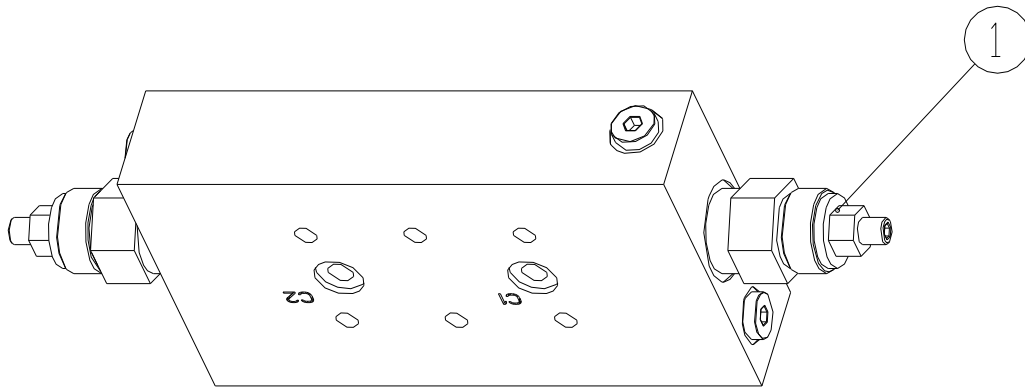


Fig 4-10

Item	Description	Memo
1	Counterbalance Valve	

Chart 4-5